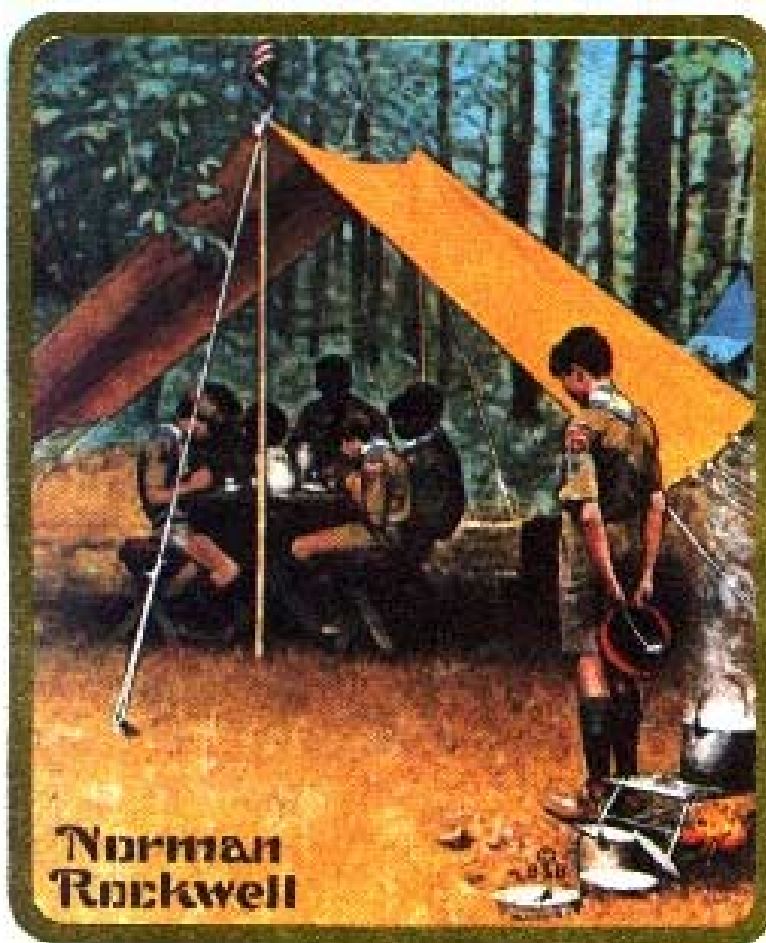




Where to Go Camping



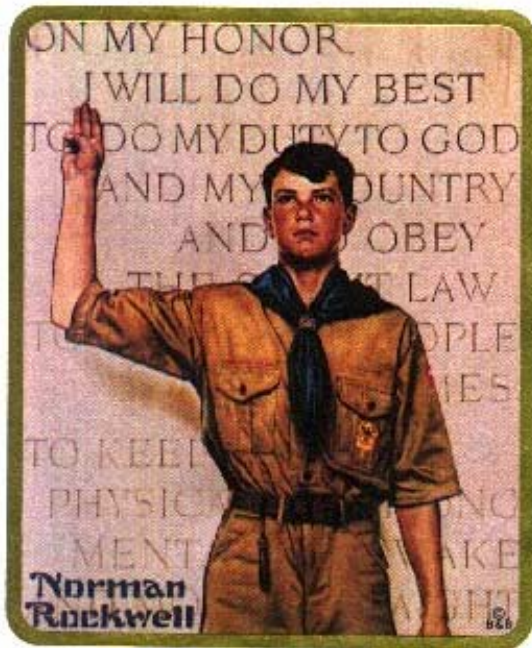
Nanepashemet Lodge #158, Order of the Arrow
is a part of Yankee Clipper Council, Boy Scouts of America,
36 Amesbury Road, Haverhill, MA 01830-2802
Tel: 978-372-0591 Fax: 978-373-9134





Scout Oath (or Promise)

*"On my honor I will do my best
To do my duty to God and my country
and to obey the Scout Law;
To help other people at all times;
To keep myself physically strong,
mentally awake, and morally straight."*



Scout Motto

Be Prepared

Scout Slogan

Do a Good Turn Daily

Outdoor Code

*As an American, I will do my best to:
Be clean in my outdoor manners,
Be careful with fire,*



Scout Law

TRUSTWORTHY

A Scout tells the truth. He keeps his promises. Honesty is part of his code of conduct. People can depend on him.

LOYAL

A Scout is true to his family, Scout leaders, friends, school, and nation.

HELPFUL

A Scout is concerned about other people. He does things willingly for others without pay or reward.

FRIENDLY

A Scout is a friend to all. He is a brother to other Scouts. He seeks to understand others. He respects those with ideas and customs other than his own.

COURTEOUS

A Scout is polite to everyone regardless of age or position. He knows good manners make it easier for people to get along together.

KIND

A Scout understands there is strength in being gentle. He treats others as he wants to be treated. He does not hurt or kill harmless things without reason.

OBEDIENT

A Scout follows the rules of his family, school, and troop. He obeys the laws of his community and country. If he thinks these rules and laws are unfair, he tries to have them changed in an orderly manner rather than disobey them.

CHEERFUL

A Scout looks for the bright side of things. He cheerfully does tasks that come his way. He tries to make others happy.

THRIFTY

A Scout works to pay his way and to help others. He saves for unforeseen needs. He protects and conserves natural resources. He carefully uses time and property.

BRAVE

A Scout can face danger even if he is afraid. He has the courage to stand for what he thinks is right even if others laugh at or threaten him.

CLEAN

A Scout keeps his body and mind fit and clean. He goes around with those who believe in living by these same ideals. He helps keep his home and community clean.

REVERENT

A Scout is reverent toward God. He is faithful in his religious duties. He respects the beliefs of others.



Welcome to the first edition of the Nanepashemet Lodge, Order of the Arrow "Where to Go Camping" Guide.

The Order of the Arrow (OA) was founded by Dr. E. Urner Goodman and Carroll A. Edson in 1915 at the Treasure Island Camp of the Philadelphia Council, Boy Scouts of America. It became an official program experiment in 1922 and was approved as part of the Scouting program in 1934. In 1948 the OA, recognized as the BSA's national brotherhood of honor campers, became an official part of the national camping program of the Boy Scouts of America.

The purpose of the Order of the Arrow is fourfold:

- To recognize those Scout campers who best exemplify the Scout Oath and Law in their daily lives
- To develop and maintain camping traditions and spirit
- To promote Scout camping
- To crystallize the Scout habit of helpfulness into a life purpose of leadership in cheerful service to others.

As an element toward our goal of fulfilling the purpose of the Order, we bring this "Where to Go Camping" Guide to you.

This edition is limited to Boy Scout facilities in Massachusetts, New Hampshire, Maine, Vermont and Rhode Island. We plan to include State and National Forests and Parks, private campgrounds, Girl Scout facilities throughout the area, and Boy Scout facilities in Connecticut in future editions.

The information included in this guide is the best available information available to us at the time of publication. Any corrections to the information in this guide would be welcome. Please forward any corrections to:

"Where to Go Camping" Guide Editor
Nanepashemet Lodge #158
Order of the Arrow
Yankee Clipper Council
36 Amesbury Road
Haverhill, Massachusetts 01830-2802

We would also be pleased to accept any suggestions for future editions. If you would like to see additional information included about each facility, or if you have any special camping areas that you would like to share with other scouting units, please forward these to the editor.

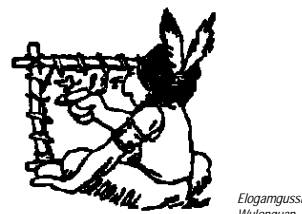
We hope this guide introduces you to some new facilities and adds some additional variety to your camping program. We hope you find it useful.

William V. Middlemiss, Jr.
Nanepashemet Lodge Chief

William V. Middlemiss, Sr.
Nanepashemet Lodge Adviser

John J. Munro I V
Nanepashemet Lodge Vice Chief

John J. Munro I I I
Nanepashemet Lodge Associate Adviser





Camp Onway	Yankee Clipper Council	5
Wah Tut Ca	Yankee Clipper Council	6
Lone Tree Scout Reservation	Yankee Clipper Council	7
Camp Aquapaug	Narraganset Council	8
Camp Bomazeen	Pine Tree Council	9
Buck Hill Scout Reservation	Narraganset Council	10
Camp Buxton	Narraganset Council	11
Camp Cachalot	Narraganset Council	12
Camp Carpenter	Daniel Webster Council	13
Champlin Scout Reservation	Narraganset Council	14
Chesterfield Scout Reservation	Great Trails Council	15
Camp Collier	Nashua Valley Council	16
Camp Duart	Friends of Martha's Vineyard	17
Camp Greenough	Cape Cod & Islands Council	18
Camp Gustin	Pine Tree Council	19
Camp Hemenway	Knox Trail Council	20
Hidden Valley Scout Reservation	Daniel Webster Council	21
Camp W. B. Hinds	Pine Tree Council	22
Maine High Adventure Base	Katahdin Area Council	23
Camp Massasoit	Boston Minuteman Council	24
Moses Scout Reservation	Pioneer Valley Council	25
Nobscot Scout Reservation	Knox Trail Council	26
Mt. Norris Scout Reservation	Green Mountain Council	27
Camp Norse	Annawan Council	28
Camp Nutter	Pine Tree Council	29
Camp Quinapoxet	Boston Minuteman Council	30
Camp Resolute	Knox Trail Council	31
Camp Richard	Nantucket District	32
Camp Roosevelt	Katahdin Area Council	33
Sandsland	Narraganset Council	34
Camp Sayer	Boston Minuteman Council	35
Camp Split Rock	Nashua Valley Council	36
Camp Squanto	Old Colony Council	37
T. L. Storer	Boston Minuteman Council	38
Camp Sunrise	Green Mountain Council	39
Treasure Valley Scout Res.	Mohegan Council	40
Camp Wanockset	Nashua Valley Council	41
White Mountain High Adventure	Boston Minuteman Council	42
Yawgoog Scout Reservation	Narraganset Council	43





Camp Onway

Location:

30 Onway Lake Road
Raymond, NH 03077
Tel: 603.895.9048

Operated by:

Yankee Clipper Council, BSA
36 Amesbury Road
Haverhill, MA 01830-2802
Tel: 978.372.0591
Fax: 978.373.9134
www.yccbsa.org



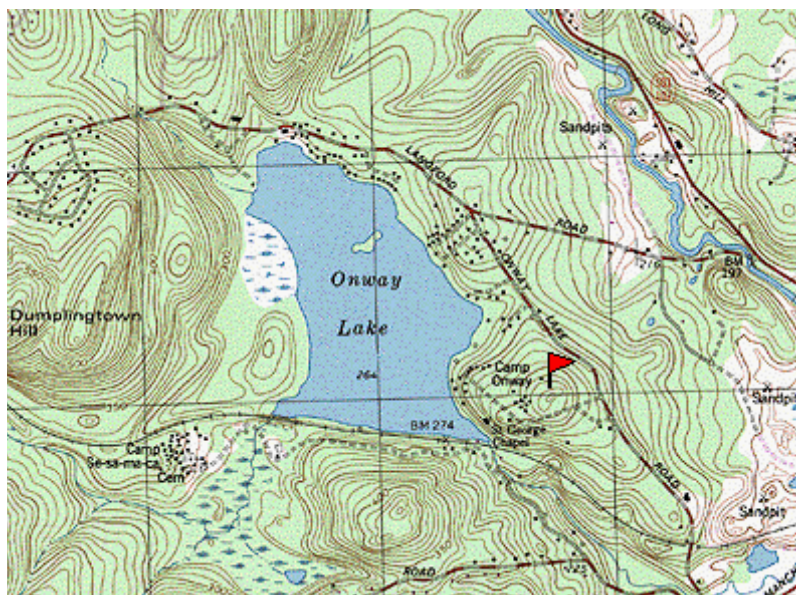
Reprinted from MapQuest.com, Inc.©2001; GDT, Inc. ©2001

Camp Onway was founded in 1929 by the North Essex Council of the Boy Scouts of America. Its name comes from the latter part of the name of the great ruling chief who led the nations of many tribes of Native Americans in this area: Passaconway.



Camp Onway is primarily used as a Boy Scout Residential Camp during July and August and is available for general use during the remainder of the year.

It is located very near to Pawtuckaway State Park and Mount Pawtuckaway, with popular hiking trails nearby.



Reprinted from TOPO!©1998 Wildflower Productions (www.topo.com)

Facilities at a Glance

- 130 Acres
- 8 Troop Campsites
- 3 Winter Cabins
- Adirondack Shelters
- Lake
- Latrines
- Flush Toilets
- Drinking Water
- Fire Rings
- Swimming
- Fishing
- Boating





Wah Tut Ca Scout Reservation



Reprinted from MapQuest.com, Inc. ©2001; GDT, Inc. ©2001

Location:

Blake's Hill Road
Northwood, NH 03077
Tel: 603.942.5233

Operated by:

Yankee Clipper Council, BSA
36 Amesbury Road
Haverhill, MA 01830-2802
Tel: 978.372.0591
Fax: 978.373.9134
www.yccbsa.org

Wah-Tut-Ca Scout Reservation was opened in 1937 by the Greater Lowell Council of the Boy Scouts of America. Its name was chosen on April 2, 1937. Scout Robert Folsey entered a contest for the new name which means "for Friends and Brothers".

Wah-Tut-Ca SR is primarily used as a Boy Scout Residential Camp during July and August and is available for general use during the remainder of the year.

It is located on Northwood Lake, with popular hiking trails nearby.



Reprinted from TOPOI!©1998 Wildflower Productions (www.topo.com)

Facilities at a Glance

- 325 Acres
- 8 Troop Campsites
- 3 Winter Cabins
- Adirondack Shelters
- Lake (1-mi shoreline)
- Latrines
- Flush Toilets
- Drinking Water
- Fire Rings
- Swimming
- Fishing
- Boating
- Hiking





Lone Tree Scout Reservation

Location:

West Shore Park Road
Kingston, NH
Tel: 603.642.3645

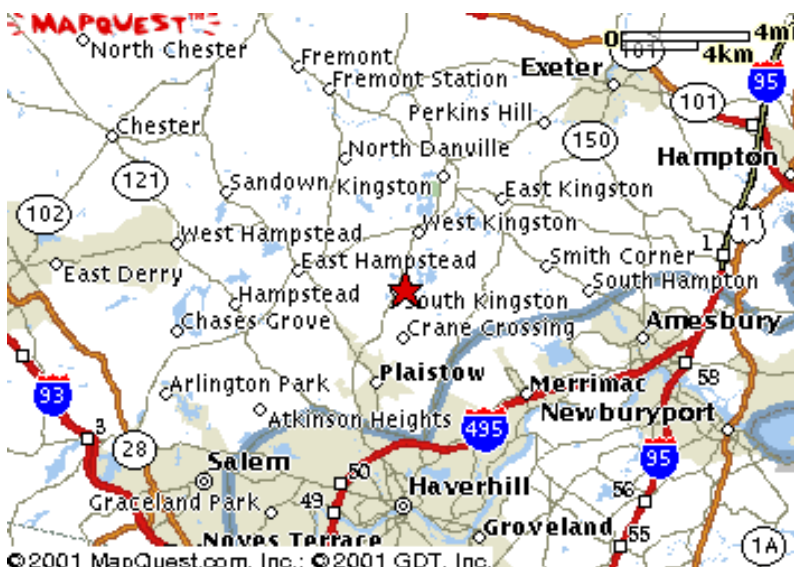
Operated by:

Yankee Clipper Council, BSA
36 Amesbury Road
Haverhill, MA 01830-2802
Tel: 978.372.0591
Fax: 978.373.9134
www.yccbsa.org

Lone Tree Scout Reservation is primarily used as a Cub Scout Day Camp with a small residential program during July and August and is available for general use during the remainder of the year.

It features a small waterfront and a wilderness fort for adventure games.

It is located very near to Plaistow, New Hampshire, with shopping nearby.



©2001 MapQuest.com, Inc.; ©2001 GDT, Inc.
Reprinted from MapQuest.com, Inc.©2001; GDT, Inc. ©2001



Reprinted from TOPO!©1998 Wildflower Productions (www.topo.com)

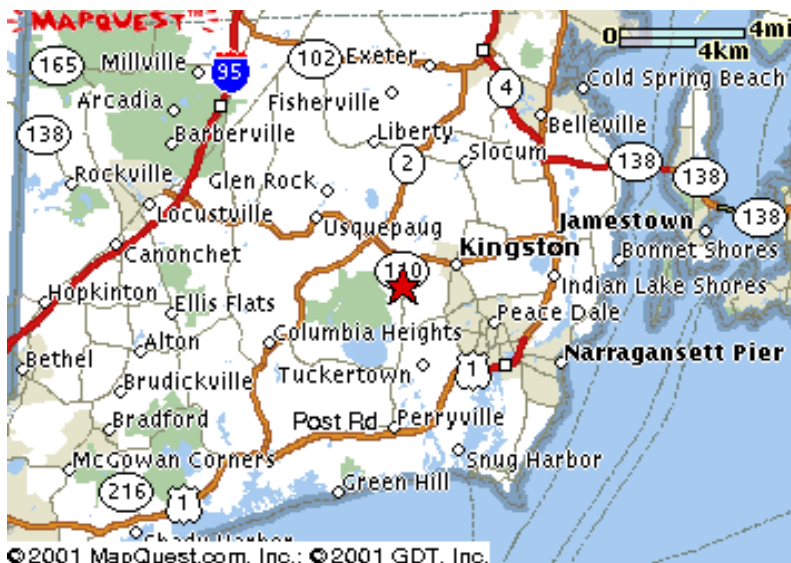
Facilities at a Glance

- 146 Acres
- 8 Troop Campsites
- 3 Winter Cabins
- Adirondack Shelters
- Lake
- Latrines
- Flush Toilets
- Drinking Water
- Fire Rings
- Swimming
- Fishing
- Boating
- Hiking





Aquapaug Scout Reservation



Reprinted from MapQuest.com, Inc. ©2001; GDT, Inc. ©2001

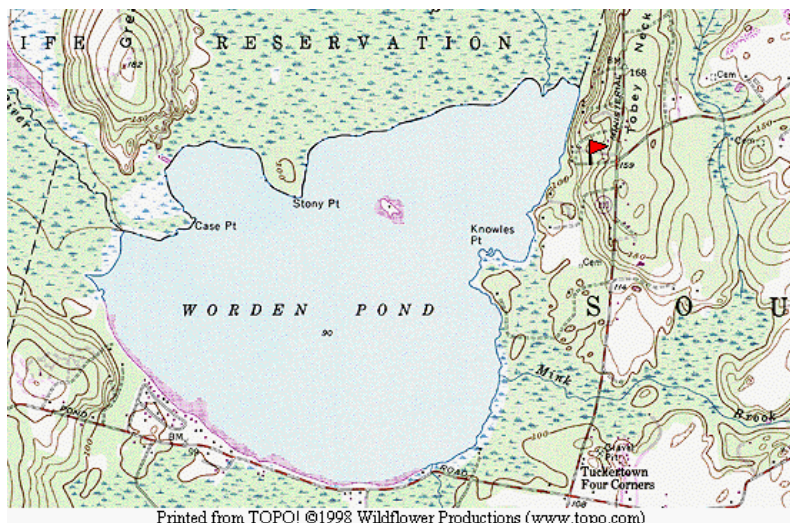
Location:

Ministerial Road
West Kingston, RI 02892
Tel: 401.783.9843
Fax: 401.

Operated by:

Narragansett Council
175 Broad Street
Providence, RI 02903-4081
Tel: 401.351.8700
Fax: 401.351.5515
www.narragansettbsa.org

Occupies 200 acres and has an extra large lake that offers swimming, boating, canoeing, sailing, motor boating and skiing (motor boats are not supplied by the camp). They offer tent camping, an activity field for athletics and camporees, boats and/or canoes for overnight groups, and a Cub Scout Day Camp program.



Printed from TOPO! ©1998 Wildflower Productions (www.topo.com)

Reprinted from TOPO! ©1998 Wildflower Productions (www.topo.com)

Facilities at a Glance

- 800 Acres
- 9 Troop Campsites
- 0 Winter Cabins
- 6 Adirondack Shelters
- Lake
- Latrines
- Flush Toilets
- Drinking Water
- Fire Rings
- Swimming
- Fishing
- Boating
- Hiking





Camp Bomazeen

Location:

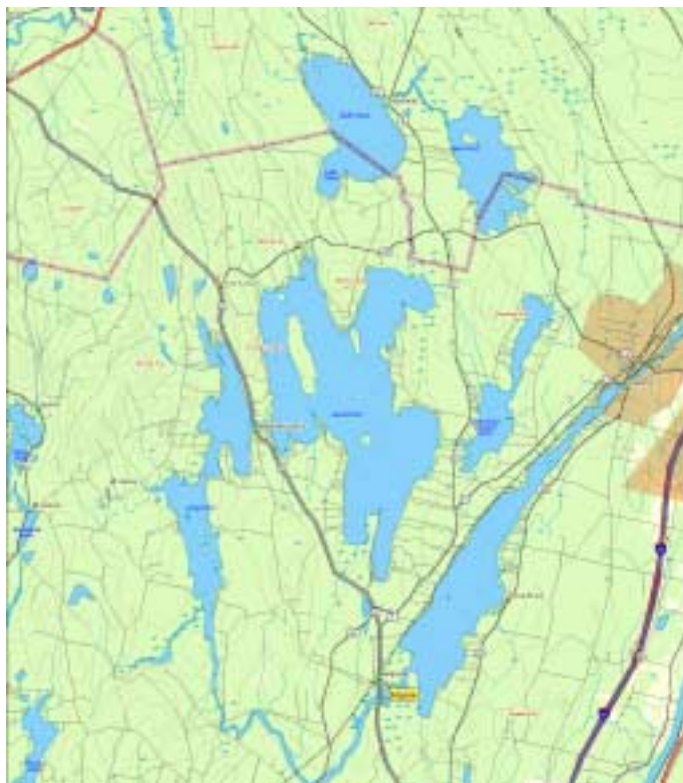
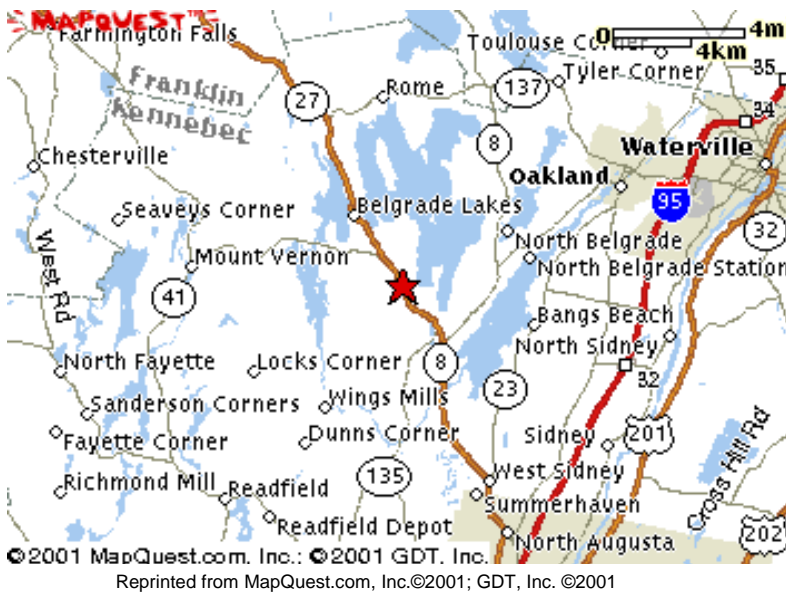
4120 Horse Point Road
Belgrade, ME 04917
Tel: 207.465.7719
Fax: 207.

Operated by:

Pine Tree Council
125 Auburn Street
Portland Maine 04103
Tel: 207.797.5252
Fax: 207.797.7183
www.pinetreebsa.org
scoutinfo@pinetreebsa.org

The camp is located in the Belgrade Lake area on Great Pond

The Camp is primarily used as a Boy Scout Residential Camp during July and August and is available for general use during the remainder of the year.



Reprinted from TopoUSA©2001 DeLorme (www.delorme.com)

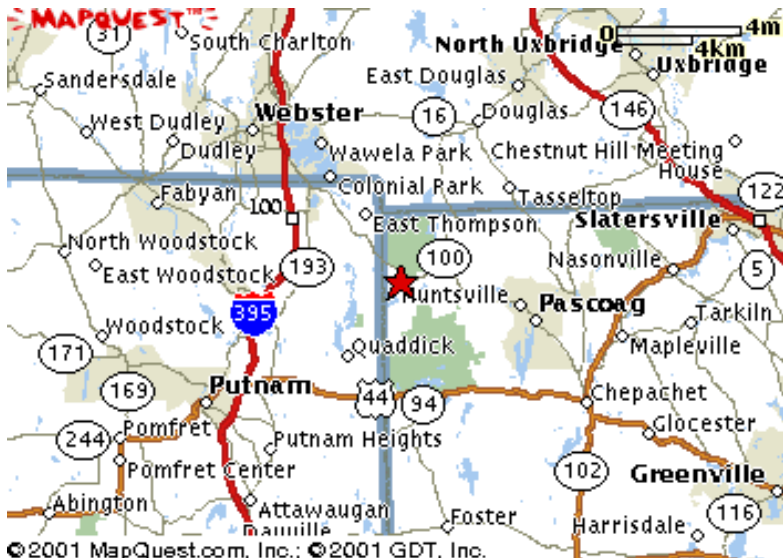
Facilities at a Glance

- 226 Acres
- 8 Troop Campsites
- 2 Winter Cabins
 - Adirondack Shelters
- Lake
- Latrines
 - Flush Toilets
- Drinking Water
- Fire Rings
- Swimming
- Fishing
- Boating
 - Hiking





Buck Hill Scout Reservation



©2001 MapQuest.com, Inc.: ©2001 GDT, Inc.

Reprinted from MapQuest.com, Inc.©2001; GDT, Inc. ©2001

Location:

464 Wakefield Road
Pascoag, RI 02859
Tel: 401.568.0456
Fax: 401.

Operated by:

Narragansett Council
175 Broad Street
Providence, RI 02903-4081
Tel: 401.351.8700
Fax: 401.351.5515
www.narragansettbsa.org

The camp occupies 1700 acres and is located on a lake (50 or more acres) that offers swimming, boating, canoeing, sailing. They offer tent campsites, winter cabins for overnight groups, family camping, an activity field for athletics and camporees, boats and/or canoes for overnight groups.



Printed from TOPO! ©1998 Wildflower Productions (www.topo.com)

Reprinted from TOPO!©1998 Wildflower Productions (www.topo.com)

Facilities at a Glance

- 1700 Acres
- 8 Troop Campsites
- 4 Winter Cabins
- Adirondack Shelters
- Lake
- Latrines
- Flush Toilets
- Drinking Water
- Fire Rings
- Swimming
- Fishing
- Boating
- Hiking





Camp Buxton

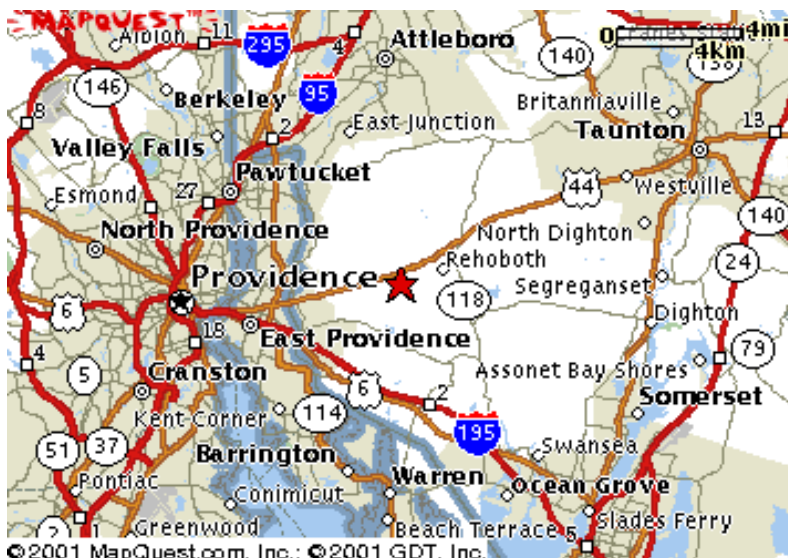
Location:

Pond Street
Rehoboth, MA 02769
Tel: 508.
Fax: 508.

Operated by:

Narragansett Council
175 Broad Street
Providence, RI 02903-4081
Tel: 401.351.8700
Fax: 401.351.5515
www.narragansettbsa.org

Occupies 100 acres. They offer tent camping, winter cabins and an activity field for athletics and camporees.



Reprinted from MapQuest.com, Inc.©2001; GDT, Inc. ©2001



Reprinted from TOPO!©1998 Wildflower Productions (www.topo.com)

Facilities at a Glance

- 100 Acres
- 4 Troop Campsites
- 1 Winter Cabins
- Adirondack Shelters
- Lake
- Latrines
- Flush Toilets
- Drinking Water
- Fire Rings
- Swimming
- Fishing
- Boating
- Hiking





Camp Cachalot

Location:

Five Mile Pond Road
Myles Standish State Forest
Carver, MA 0
Tel: 508.
Fax: 508.

Operated by:

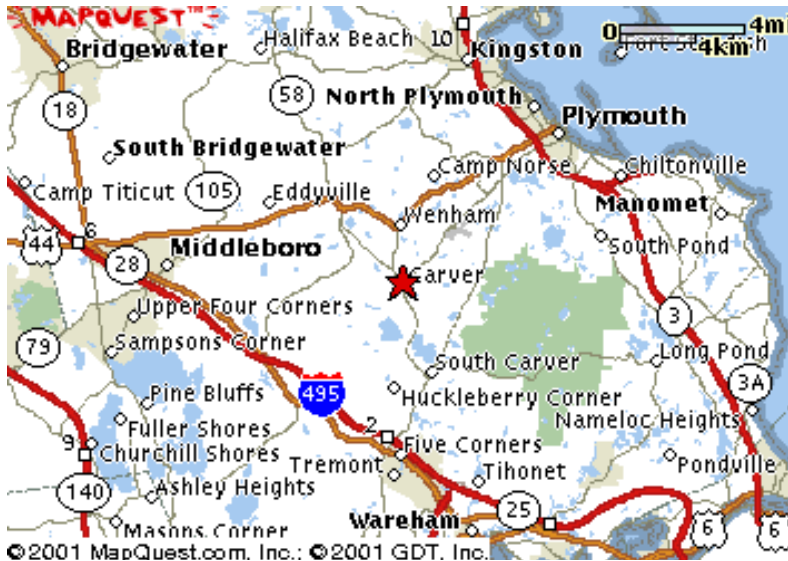
Narragansett Council
175 Broad Street
Providence, RI 02903-4081
Tel: 401.351.8700
Fax: 401.351.5515
www.narragansettbsa.org

Cachalot is located in a hilly barren pine forest surrounded by Myles Standish State Forest. The property contains four ponds.

The camp occupies 880 acres and has a pond/lake (10 acres) that offers swimming, boating, canoeing, and possible limited sailing. It offers tent campsites, Adirondack (lean-to) shelters, and winter cabins for overnight groups, family camping, an activity field for athletics and camporees, boats and/or canoes for overnight groups, a dining hall and patrol cooking during summer camp, plus High Adventure Programs (extended backpacking and/or canoe trips).

Facilities at a Glance

- 800 Acres
- 15 Troop Campsites
- 2 Winter Cabins
- Adirondack Shelters
- Lake
- Latrines
- Flush Toilets
- Drinking Water
- Fire Rings
- Swimming
- Fishing
- Boating
- Hiking



Reprinted from MapQuest.com, Inc. ©2001; GDT, Inc. ©2001



Reprinted from TOPO!©1998 Wildflower Productions (www.topo.com)





Camp Carpenter



©2001 MapQuest.com, Inc. ©2001 GDT, Inc.

Reprinted from MapQuest.com, Inc.©2000; GDT, Inc. ©2000

Location:

300 Bodwell Road
Manchester, NH 03109
Tel: 603.623-5962
Fax: 603.

Operated by:

Daniel Webster Council, BSA
571 Holt Avenue
Manchester, NH 03103-1892
Tel: 603.625.6431
Fax: 603.625.2467
www.dwcbsa.org

Camp Carpenter surrounds Long Pond, which is used for swimming, boating, canoeing and the pond is stocked with Bass for great fishing. They offer tent campsites, Adirondacks and winter cabins for overnights. They also have athletic fields (baseball and soccer), an archery range, a BB gun shooting range and a dining hall for summer camp.

Camp Carpenter is also the home of the Lawrence L. Lee Scouting Museum and Max I. Silber Scouting Library which is an exciting, unique, and colorful repository for an exceedingly large collection of Boy Scout Memorabilia.

Facilities at a Glance

- 225 Acres
- 6 Troop Campsites
- 4 Winter Cabins
- Adirondack Shelters
- Lake
- Latrines
- Flush Toilets
- Drinking Water
- Fire Rings
- Swimming
- Fishing
- Boating
- Hiking

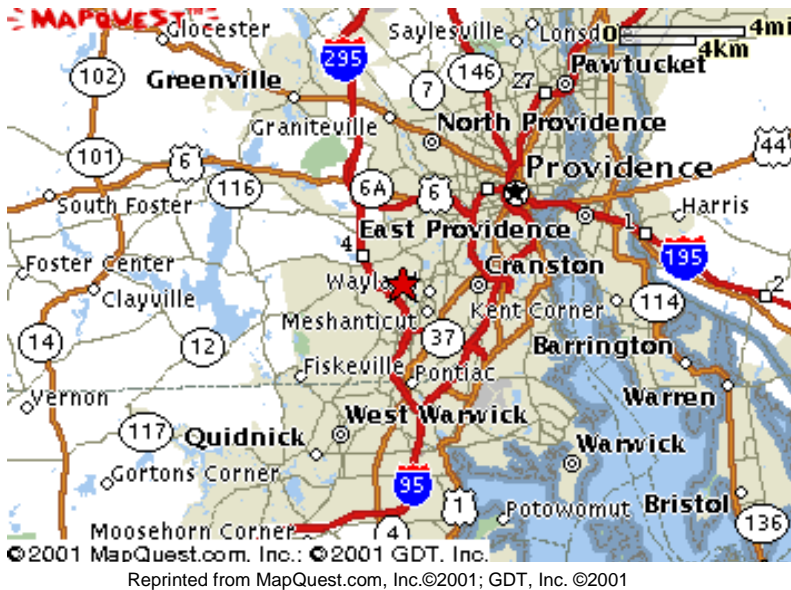


Reprinted from TOPOI©1998 Wildflower Productions (www.topo.com)





Champlin Scout Reservation



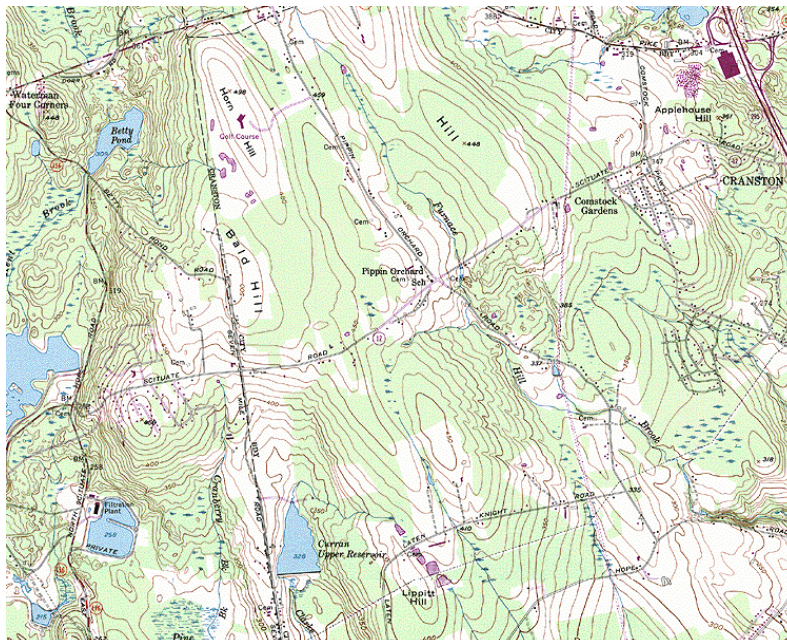
Location:

Scituate Avenue
Cranston, RI 02921
Tel: 401.944.9550
Fax: 401.944.3850

Operated by:

Narragansett Council
175 Broad Street
Providence, RI 02903-4081
Tel: 401.351.8700
Fax: 401.351.5515
www.narragansettbsa.org

Occupies 125 acres and has a swimming pool and a river for boating and canoeing. They offer tent camping, winter cabins, an activity field for athletics and camporees, boats and/or canoes for overnight groups, and a Cub Scout Day Camp program.



Reprinted from TOPO!©1998 Wildflower Productions (www.topo.com)

Facilities at a Glance

- 125 Acres
- 18 Troop Campsites
- 3 Winter Cabins
- Adirondack Shelters
- Lake
- Latrines
- Flush Toilets
- Drinking Water
- Fire Rings
- Swimming
- Fishing
- Boating
- Hiking





Chesterfield Scout Reservation



©2001 MapQuest.com, Inc.; ©2001 GDT, Inc.
Reprinted from MapQuest.com, Inc.©2001; GDT, Inc. ©2001



Reprinted from TopoUSA©2001 DeLorme (www.delorme.com)

Location:

Sugar Hill Road
Chesterfield, MA 01096
Tel: 413.296.4248
Fax: 413.

Operated by:

Great Trails Council
88 Old Windsor Road
Dalton, MA 01226-1398
Tel: 413.684.3542
Fax: 413.684.3565
www.greattrailsbsa.org

Chesterfield Scout Reservation is located in rolling forested hills. The private 40 acre pond divides the main camp from the wilderness camp.



Chesterfield Scout Reservation is primarily used as a Boy Scout Residential Camp during July and August and is available for general use during the remainder of the year.

Facilities at a Glance

- 500 Acres
- 13 Troop Campsites
- 4 Winter Cabins
 - Adirondack Shelters
 - Lake
 - Latrines
 - Flush Toilets
 - Drinking Water
 - Fire Rings
 - Swimming
 - Fishing
 - Boating
 - Hiking





Camp Collier



Location:

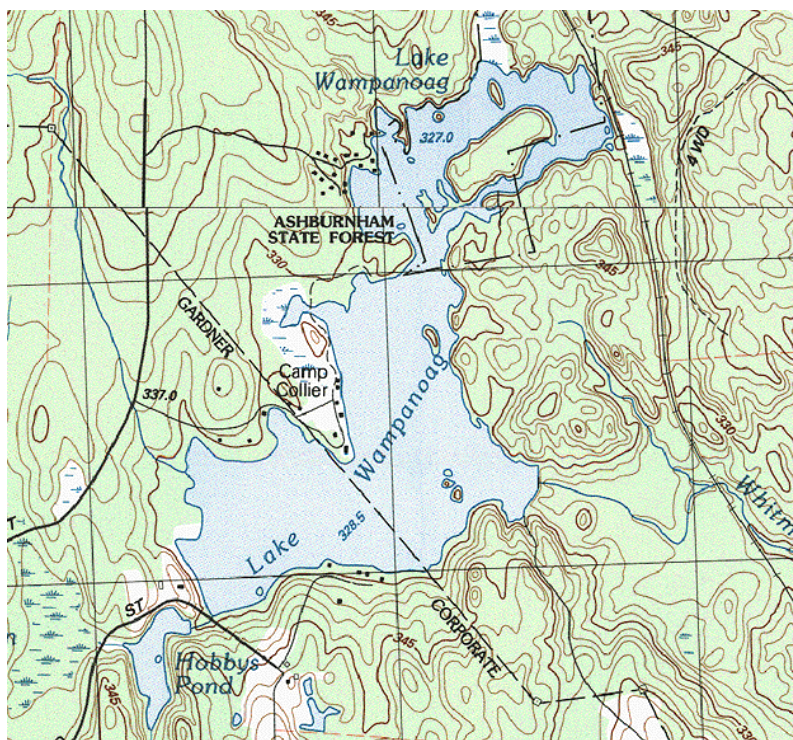
Camp Collier Road
(off of Kelton Street)
Gardner, MA 0
Tel: 978.
Fax: 978.

Operated by:

Nashua Valley Council
1980 Lunenburg Road
Lancaster, MA 01523-2735
Tel: 978.534.3532
Fax: 978.534.4618
www.nashuavalleybsa.org

The camp occupies 600 acres of land around 2.5 mile long Lake Wampanoag. They offer swimming, row boating, canoeing, tent campsites, Adirondacks (lean-to) shelters, winter cabins, an activity field for athletics and campfires. They also offer row boat and canoe rentals for overnight groups that supply their own BSA or Red Cross certified Lifeguard.

Skiing is available ten miles from camp at Mount Wachusett State Park. Flush toilets and showers are seasonally available.



Facilities at a Glance

- 600 Acres
- 6 Troop Campsites
- 2 Winter Cabins
- 6 Adirondack Shelters
- Lake
- Latrines
- Flush Toilets
- Drinking Water
- Fire Rings
- Swimming
- Fishing
- Boating
- Hiking





Camp Duarte

Location:

Martha's Vineyard, MA 02568
Tel: 508.
Fax: 508.

Operated by:

Friends of Martha's Vineyard
Scouting
P. O. Box 811
Vineyard Haven, MA 02568
Tel: 508.

The camp is located on a nine acre site with several tent sites, two lean-tos, a latrine, and a pump house.



©2001 MapQuest.com, Inc.: ©2001 GDT, Inc.
Reprinted from MapQuest.com, Inc.©2000; GDT, Inc. ©2000



Reprinted from TOPO!©1998 Wildflower Productions (www.topo.com)

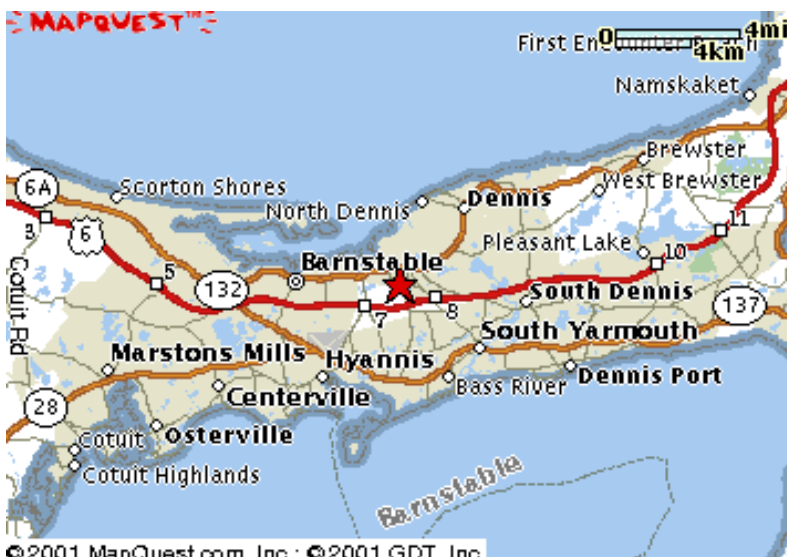
Facilities at a Glance

- 9 Acres
- 3 Troop Campsites
- 0 Winter Cabins
- Adirondack Shelters
- Lake
- Latrines
- Flush Toilets
- Drinking Water
- Fire Rings
- Swimming
- Fishing
- Boating
- Hiking





Camp Greenough



©2001 MapQuest.com, Inc.: ©2001 GDT, Inc.

Reprinted from MapQuest.com, Inc.©2001; GDT, Inc. ©2001

Location:

Pine Street
Yarmouthport, MA 02675
Tel: 508.362.3428
Fax: 508.

Operated by:

Cape Cod & Islands Council
247 Willow Street
Yarmouth Port, MA 02675-1744
Tel: 508.362.4322
Fax: 508.
www.scoutscapecod.org

The camp occupies 300 acres on Cape Cod, MA and has a 35 acre pond with a sandy beach that offers swimming, sail boating and canoeing. The camp has tent camp sites, Adirondack (lean-to) shelters and winter cabins for overnight use, an activity field for athletics and a COPE course. The camp has a brand new shower house with 8 private individuals units and 2 are heated for year round use and handicapped access. The camp is a short ride from the Cape Cod National Seashore and the Cape Bike Rail Trail, as well as the many sites found on Cape Cod.



Reprinted from TOPO!©1998 Wildflower Productions (www.topo.com)

Facilities at a Glance

- 300 Acres
- 14 Troop Campsites
- 4 Winter Cabins
- 9 Adirondack Shelters
- Lake
- Latrines
- Flush Toilets
- Drinking Water
- Fire Rings
- Swimming
- Fishing
- Boating
- Hiking





Camp Gustin

Location:

Loon Pond
Sabattus, ME 04280
Tel: 207.375.8521
Fax: 207.

Operated by:

Pine Tree Council
125 Auburn Street
Portland Maine 04103
Tel: 207.797.5252
Fax: 207.797.7183
www.pinetreebsa.org
scoutinfo@pinetreebsa.org

The camp occupies 125 acres, offers a Lake (under 10 acres) for swimming, row boating and canoeing. Also offers campsites, an activity field and a dining hall.



Reprinted from MapQuest.com, Inc.©2000; GDT, Inc. ©2000



Reprinted from TOPO!©1998 Wildflower Productions (www.topo.com)

Facilities at a Glance

- 125 Acres
- 6 Troop Campsites
- 0 Winter Cabins
- Adirondack Shelters
- Lake
- Latrines
- Flush Toilets
- Drinking Water
- Fire Rings
- Swimming
- Fishing
- Boating
- Hiking





Camp Hemenway

Location:

Tamworth, NH 0

Tel: 603.

Fax: 603.

Operated by:

Knox Trail Council

490 Union Avenue

Framingham, MA 01702-5817

Tel: 508.872.6551

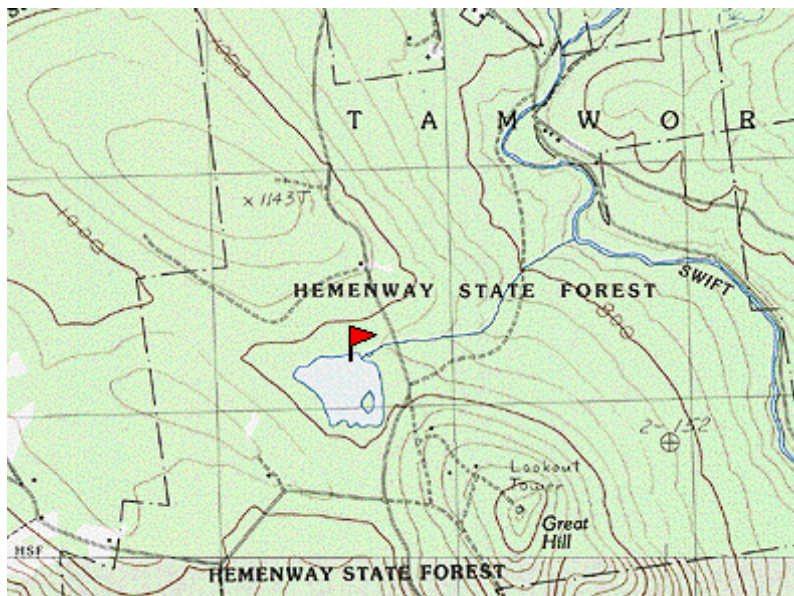
Fax: 508.872.9092

www.ktc-bsa.org



Camp Hemenway is located off New Hampshire route 25 in the town of Tamworth, NH, at the Southern end of the White Mountain National Forest. Bookings are taken a year in advance, and winter months usually fill immediately. Cabin keys must be picked up and returned at the Council Office during regular business hours.

The campsite is about 1/4 mile into the forest on a slight uphill climb. Camp Hemenway consists of two cabins with electricity (one with wood stove and one electrically heated), a woodshed, a latrine, several lean-tos and lots of open ground for tents. There is a fire tower nearby with spectacular views.



Reprinted from TOPO!©1998 Wildflower Productions (www.topo.com)

Facilities at a Glance

100 Acres

1 Troop Campsites

2 Winter Cabins

- Adirondack Shelters
- Lake
- Latrines
- Flush Toilets
- Drinking Water
- Fire Rings
- Swimming
- Fishing
- Boating
- Hiking





Hidden Valley Scout Reservation



©2001 MapQuest.com, Inc.; ©2001 GDT, Inc.
Reprinted from MapQuest.com, Inc.©2001; GDT, Inc. ©2001

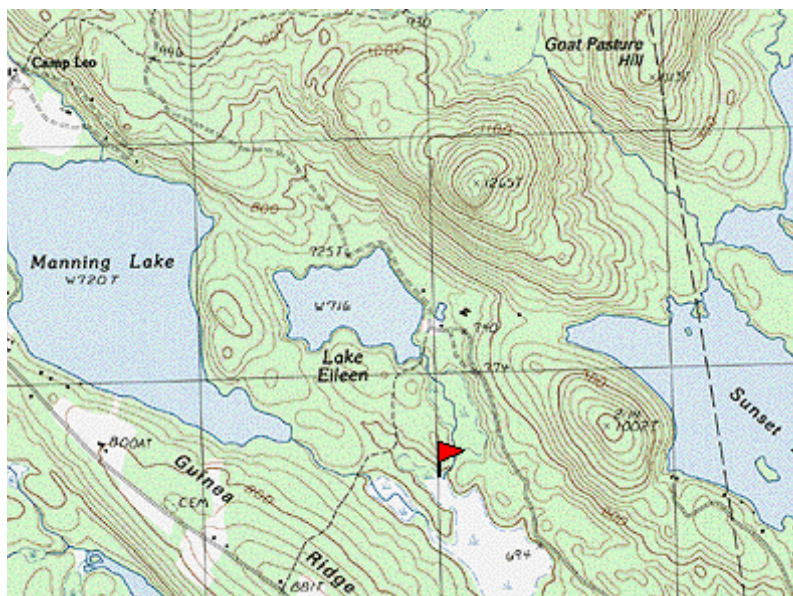
Location:

Eileen Shore Road
RFD 1 Box 6232
Gilmanton Iron Works, NH 03077
Tel: 603.364.2900
Fax: 603.364.0216

Operated by:

Daniel Webster Council, BSA
571 Holt Avenue
Manchester, NH 03103-1892
Tel: 603.625.6431
Fax: 603.625.2467
www.dwcbsa.org

Hidden Valley Scout Reservation is located in three counties and has four lakes, three waterfronts and several mountains. It is primarily used as a Boy Scout Residential Camp during July and August and is available for general use during the remainder of the year. It is located very near to , with popular hiking trails nearby.



Reprinted from TOPO!©1998 Wildflower Productions (www.topo.com)

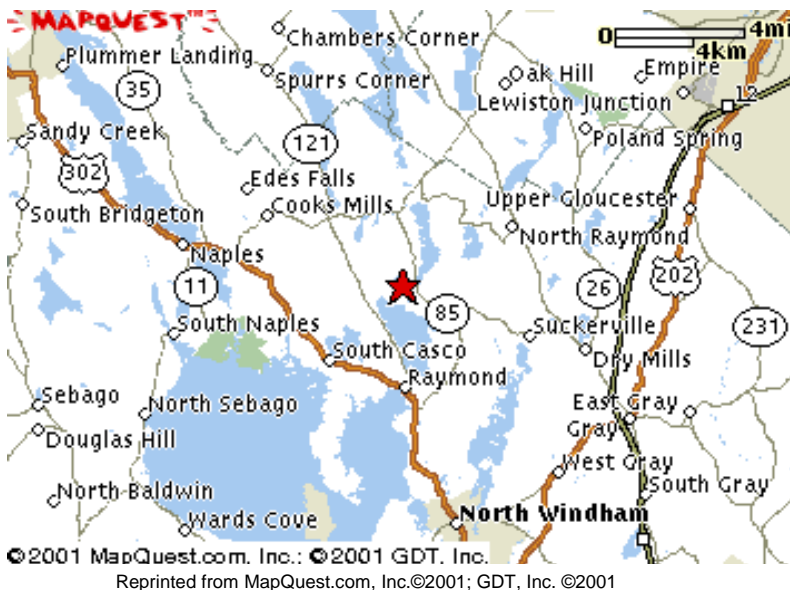
Facilities at a Glance

- 3,500 Acres
- 15 Troop Campsites
- 5 Winter Cabins
- Adirondack Shelters
- Lake
- Latrines
- Flush Toilets
- Drinking Water
- Fire Rings
- Swimming
- Fishing
- Boating
- Hiking





Camp William B. Hinds



Location:

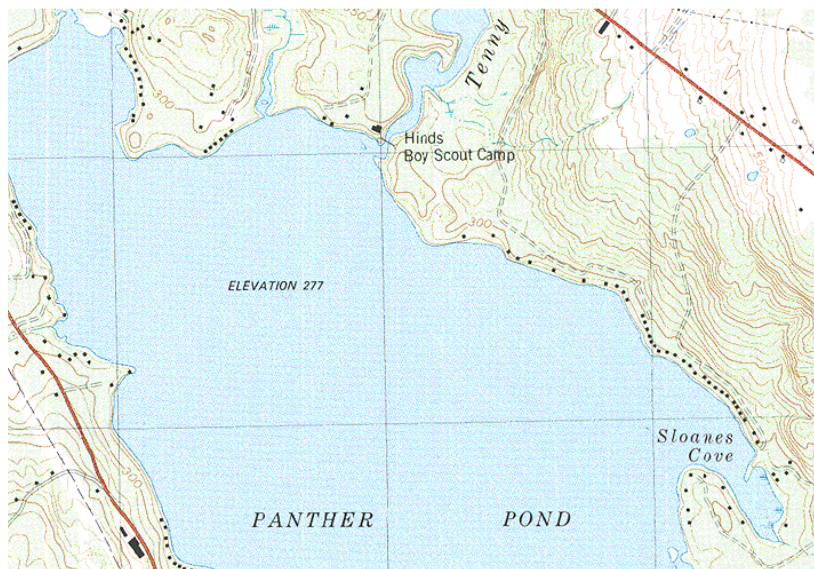
146 Plains Road
Panther Pond
Raymond, ME 04071
Tel: 207.655.4878
Fax: 207.

Operated by:

Pine Tree Council
125 Auburn Street
Portland Maine 04103
Tel: 207.797.5252
Fax: 207.797.7183
www.pinetreebsa.org
scoutinfo@pinetreebsa.org

Camp Hinds is located on Panther Pond near Sebang Lake.

Camp Hinds is primarily used as a Boy Scout Residential Camp during July and August and is available for general use during the remainder of the year.



Reprinted from TOPO!©1998 Wildflower Productions (www.topo.com)

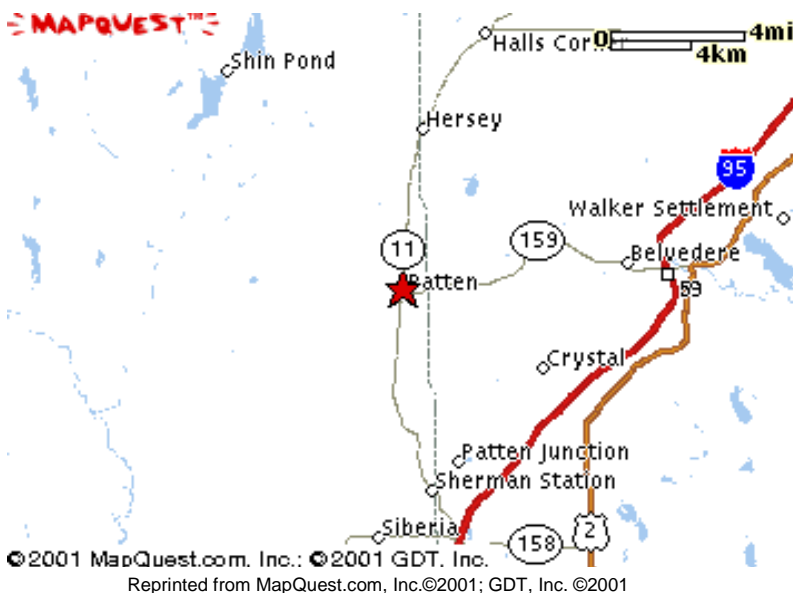
Facilities at a Glance

- 230 Acres
- 16 Troop Campsites
- 2 Winter Cabins
- Adirondack Shelters
- Lake
- Latrines
- Flush Toilets
- Drinking Water
- Fire Rings
- Swimming
- Fishing
- Boating
- Hiking





Maine High Adventure Area



Location:

HCR 74, Box 69
Whiting, ME 04691
Tel: 207.259.4408
Fax: 207.

Operated by:

Katahdin Area Council
P. O. Box 1869
Bangor, ME 04402-1869
Tel: 207.866.3528
Fax: 207.866.3283
www.katahdinareabsa.org

Owned by the Katahdin Area Council, this High Adventure Area covers 10,000 square miles and consists of Mount Katahdin, the Allagash Waterway, a portion of the Appalachian Trail and the Penobscot watershed. The Matagamon Scout Base Camp is located at the north-east corner of Baxter State Park on Grand Lake Matagamon, 27 miles northwest of Patten, Maine. They offer special high adventure treks all summer long (from mid June to Mid August) that last from 6 to 10 days each. Contact:

<http://www.maineGuide.com/sportsmen/mha/>

Facilities at a Glance

- *** Acres
- ** Troop Campsites
- 1 Winter Cabins
- Adirondack Shelters
- Lake
- Latrines
- Flush Toilets
- Drinking Water
- Fire Rings
- Swimming
- Fishing
- Boating
- Hiking



Reprinted from TopoUSA©2001 DeLorme (www.delorme.com)





Camp Massasoit

Location:

Little Sandy Pond Road
Plymouth, MA 0
Tel: 508.888.6484
Fax: 508.

Operated by:

Boston Minuteman Council
199 State Street, Third Floor
Boston, MA 02109-2648
Tel: 617.723.0007
Fax: 617.723.1779
www.bsaboston.org

This camp is located only five minutes from the Cape Cod Canal, with beaches, Plimouth Plantation, Plymouth Rock and the Mayflower very near. It has five winterized cabins with capacities of 14-24, each with electric ranges and refrigerators, one rustic wood-heated cabin for 14, a fully heated 120 capacity Lodge/Dining Hall with complete kitchen facilities, two outdoor pavilions with picnic tables and barbeque pits.

Fishing is plentiful on Elbow Pond



Reprinted from MapQuest.com, Inc.©2001; GDT, Inc. ©2001



Reprinted from TOPO!©1998 Wildflower Productions (www.topo.com)

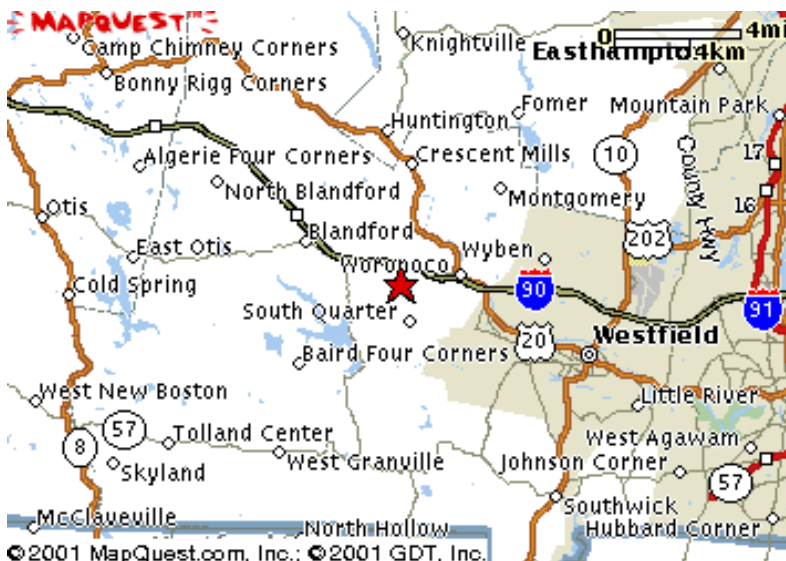
Facilities at a Glance

- 250 Acres
- 15 Troop Campsites
- 7 Winter Cabins
 - Adirondack Shelters
 - Lake
 - Latrines
 - Flush Toilets
 - Drinking Water
 - Fire Rings
 - Swimming
 - Fishing
 - Boating
 - Hiking





Moses Scout Reservation



©2001 MapQuest.com, Inc.; ©2001 GDT, Inc.
Reprinted from MapQuest.com, Inc. ©2000; GDT, Inc. ©2000

Location:

Birch Hill Road
Woronoco, MA 01097
Tel: 413.568.0211
Fax: 413.

Operated by:

Pioneer Valley Council
249 Exchange Street
Chicopee, MA 01013-1679
Tel: 413.594.9196
Fax: 413.
www.pvcbsa.org

This reservation is located in a heavily wooded low mountain area. Russell Pond serves as the aquatic center of camp.

The camp is primarily used as a Boy Scout Residential Camp during July and August and is available for general use during the remainder of the year.

Directions to Camp

From Mass Pike (I-90) take Exit 3 Westfield, turn right on Route 10/202 South, travel 5 sets of lights, turn right onto Route 20 West, travel 5.5 miles, turn left onto Route 23 South, travel 1.4 miles, turn left onto General Knox Rd., travel 0.2 miles, turn right onto Birch Hill Road, follow until you see Lake Woronoak and Ranger's Office on left.

Facilities at a Glance

- 1,600 Acres
- 13 Troop Campsites
- 7 Winter Cabins
- 6 Adirondack Shelters
 - Lake
 - Latrines
 - Flush Toilets
 - Drinking Water
 - Fire Rings
 - Swimming
 - Fishing
 - Boating
 - Hiking





Nobscot Scout Reservation



©2001 MapQuest.com, Inc.: ©2001 GDT, Inc.
Reprinted from MapQuest.com, Inc.©2001; GDT, Inc. ©2001

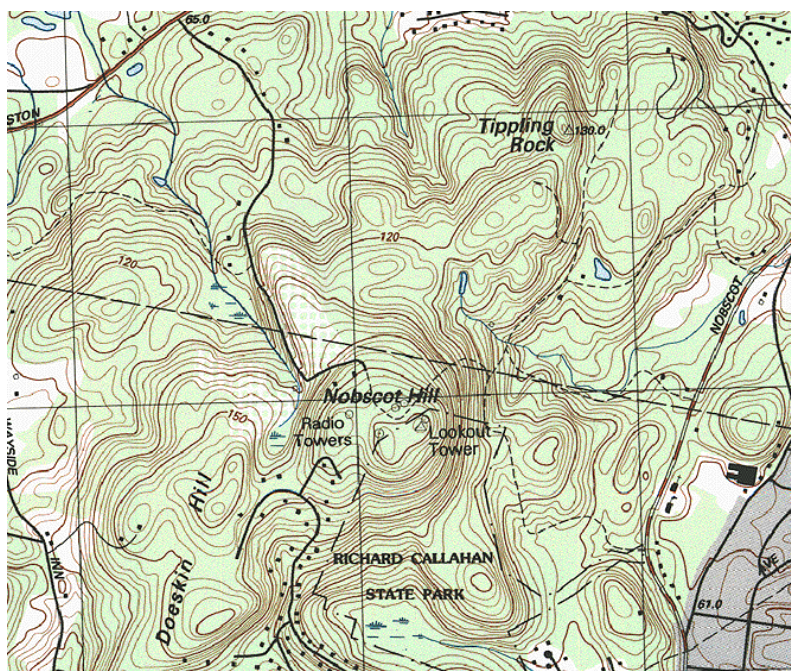
Location:

Edgell Road
Sudbury, MA 01776
Tel: 978.443.5161
Fax: 978.

Operated by:

Knox Trail Council
490 Union Avenue
Framingham, MA 01702-5817
Tel: 508.872.6551
Fax: 508.872.9092
www.ktc-bsa.org

A general purpose scout camp used year-round.



Reprinted from TOPO!©1998 Wildflower Productions (www.topo.com)

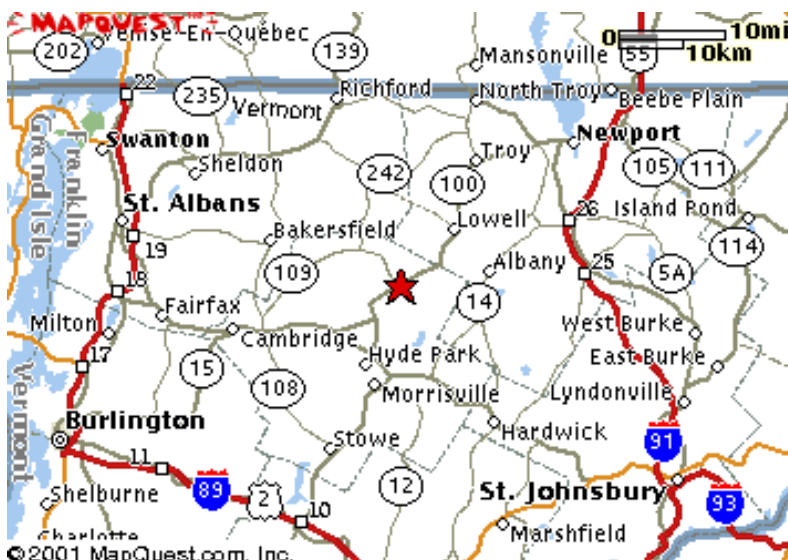
Facilities at a Glance

- 480 Acres
- 6 Troop Campsites
- 4 Winter Cabins
- Adirondack Shelters
- Lake
- Latrines
- Flush Toilets
- Drinking Water
- Fire Rings
- Swimming
- Fishing
- Boating
- Hiking





Mt. Norris Scout Reservation



Reprinted from MapQuest.com, Inc.©2001; GDT, Inc. ©2001



Reprinted from TopoUSA©2001 DeLorme (www.delorme.com)

Location:

PO Box 117
Eden, VT 05652
Tel: 802.704.3089
Fax: 802.

Operated by:

Green Mountain Council
P. O. Box 557
Waterbury, VT 05676-0557
Tel: 802.244.5189
Fax: 802.244.5259
users.aol.com/gmcbsa

The camp is located in the northern section of the Green Mountains, about 25 miles south of the Canadian Border, off of Route 100, just north of Johnson, Vt. The camp is 2500 acres in size and is located on Lake Eden which is about two miles at its longest points. The waterfront offers sailing, canoeing, kayaking, rowing, rafting, and scuba diving. Units can canoe through the Green River Reservoir in Morrisville.

The camp is primarily used as a Boy Scout Residential Camp during July and August and is available for general use during the remainder of the year.

Facilities at a Glance

- 2500 Acres
- 12 Troop Campsites
- 4 Winter Cabins
 - Adirondack Shelters
 - Lake
 - Latrines
 - Flush Toilets
 - Drinking Water
 - Fire Rings
 - Swimming
 - Fishing
 - Boating
 - Hiking





Camp Norse

Location:

112 Parting Ways Road
Kingston, MA 02364
Tel: 781.585.2262
Fax: 781.

Operated by:

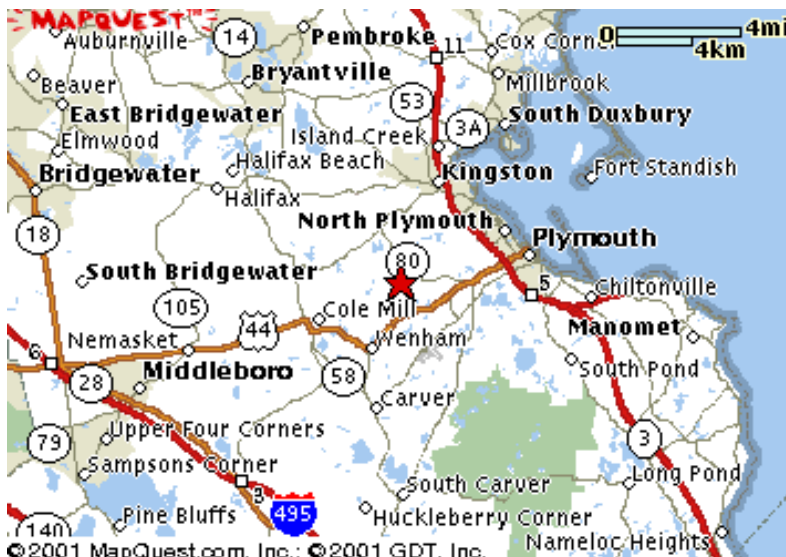
Annawon Council
219 Winthrop Street
Taunton, MA 02780-4468
Tel: 508.824.4164
Fax: 508.
www.annawonbsa.org

Camp Norse has been serving Scouts since 1934. The camp occupies 350 acres and is located on Darby Pond (10 acres) in Plymouth, Massachusetts. It offers swimming, a waterfront for boating, canoeing, and possible limited sailing. It offers tent campsites, Adirondack shelters, and winter cabins for overnight groups, an activity field for athletics and camporees, boats and/or canoes for overnight groups.

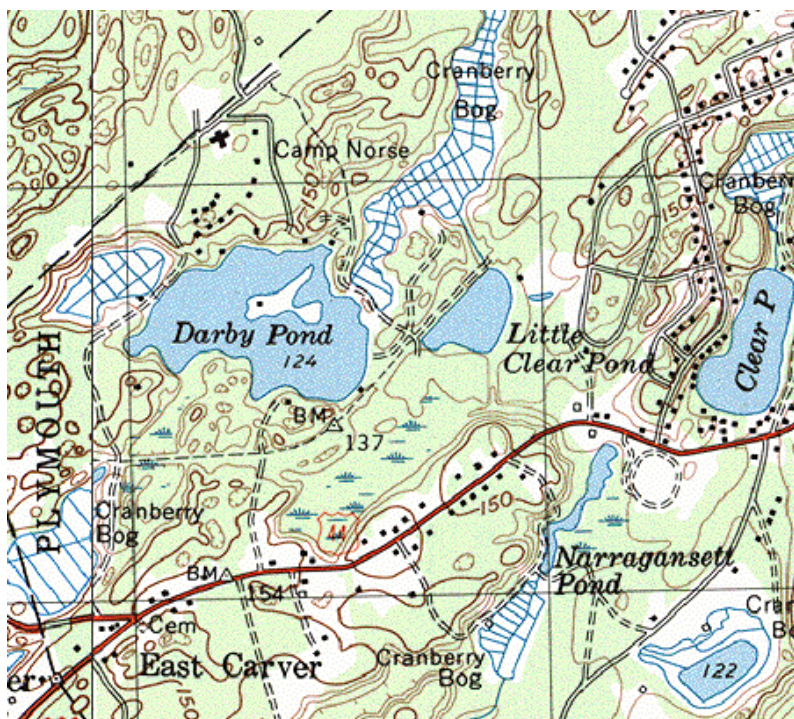
The camp is within minutes of Cape Cod Canal Bike Path, Plymouth Rock, Plimouth Plantation, and the Mayflower.

Facilities at a Glance

- 350 Acres
- 8 Troop Campsites
- 8 Winter Cabins
- Adirondack Shelters
- Lake
- Latrines
- Flush Toilets
- Drinking Water
- Fire Rings
- Swimming
- Fishing
- Boating
- Hiking



Reprinted from MapQuest.com, Inc. ©2001; GDT, Inc. ©2000



Reprinted from TOPO!©1998 Wildflower Productions (www.topo.com)





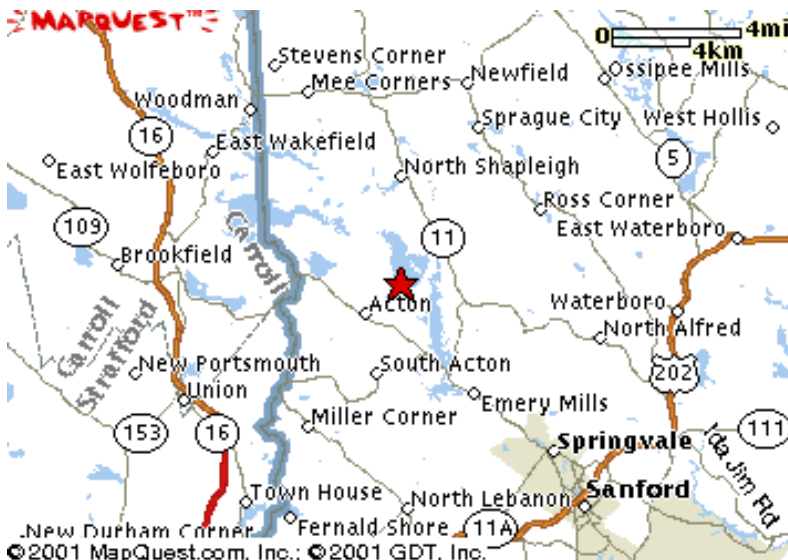
Camp Nutter

Location:

East Shore Drive
Acton, ME 04001
Tel: 207.793.4740
Fax: 207.

Operated by:

Pine Tree Council
125 Auburn Street
Portland Maine 04103
Tel: 207.797.5252
Fax: 207.797.7183
www.pinetreebsa.org
scoutinfo@pinetreebsa.org



Reprinted from MapQuest.com, Inc. ©2001; GDT, Inc. ©2001

The camp occupies 80 acres and is located on Loon Pond (under 10 acres in size). They offer tent camp sites, winter cabins, and a Cub Scout Day Camp program.



Reprinted from TopoUSA©2001 DeLorme (www.delorme.com)

Facilities at a Glance

- 80 Acres
- 6 Troop Campsites
- 2 Winter Cabins
- Adirondack Shelters
- Lake
- Latrines
- Flush Toilets
- Drinking Water
- Fire Rings
- Swimming
- Fishing
- Boating
- Hiking





Camp Quinapoxet

Location:

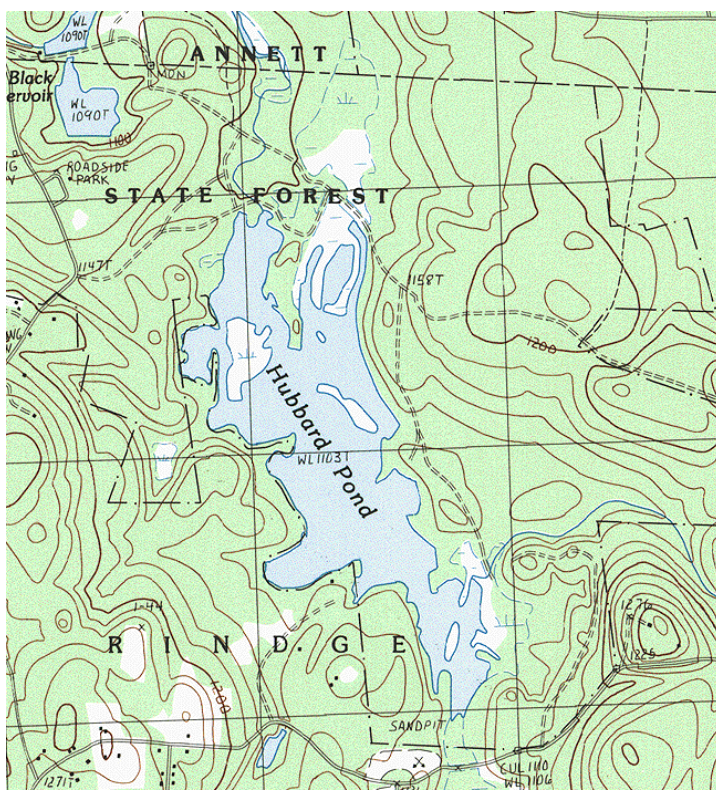
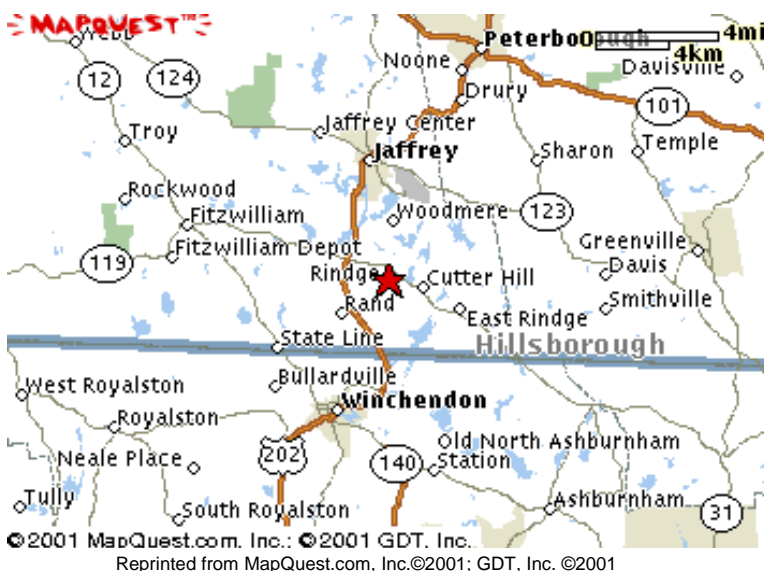
Rindge, NH
Tel: 603.
Fax: 603.

Operated by:

Boston Minuteman Council
199 State Street, Third Floor
Boston, MA 02109-2648
Tel: 617.723.0007
Fax: 617.
www.bsaboston.org

The camp adjoins the 3,000 acre Annett Forest. Hubbard Pond is used for aquatics.

Camp Quinapoxet occupies 180 acres on Hubbard Pond (more than 50 acres) which offers swimming, boating and canoeing, tent camp sites, Adirondack (lean-to) shelters and winter cabins for overnight use and family camping, an activity field for athletics and camporees, boats and/or canoes for overnight groups, and a summer camp dining hall.



Facilities at a Glance

- 180 Acres
- 6 Troop Campsites
- 2 Winter Cabins
- Adirondack Shelters
- Lake
- Latrines
- Flush Toilets
- Drinking Water
- Fire Rings
- Swimming
- Fishing
- Boating
- Hiking





Camp Resolute



Reprinted from MapQuest.com, Inc.©2001; GDT, Inc. ©2001

Location:

75 Hudson Road
Bolton, MA 0
Tel: 978.779.2777
Fax: 978.

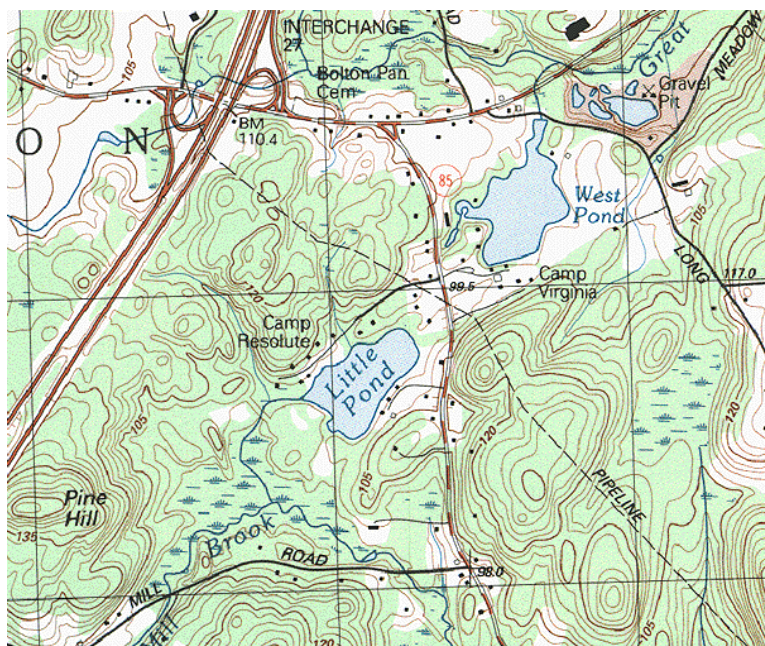
Operated by:

Knox Trail Council
490 Union Avenue
Framingham, MA 01702-5817
Tel: 508.872.6551
Fax: 508.872.9092
www.ktc-bsa.org

Camp Resolute is located on the E. Paul Robsham Scout Reservation and includes a private pond for aquatic activities. In addition to the 300 plus acres surrounding "Little Pond", facilities include; 11 Troop Campsites, modern kitchen facilities, a dining hall which can seat 280 people, an Administration Building, two youth showerhouses, an adult/handicapped accessible showerhouse, COPE Course, Handicraft Area, a Scoutcraft area, an Ecology/Conservation area, a fully outfitted waterfront with rowboats, sailboats as well as canoes, a Rifle and Archery range, and a Health Lodge.

Facilities at a Glance

- 300 Acres
- 11 Troop Campsites
- 2 Winter Cabins
 - Adirondack Shelters
 - Lake
 - Latrines
 - Flush Toilets
 - Drinking Water
 - Fire Rings
 - Swimming
 - Fishing
 - Boating
 - Hiking



Reprinted from TOPO!©1998 Wildflower Productions (www.topo.com)





Camp Richard

Location:

Lat: 41.28 Lon: -70.10

Nantucket, MA 0

Tel: 508.

Fax: 508.

Operated by:

Cape Cod & Islands Council

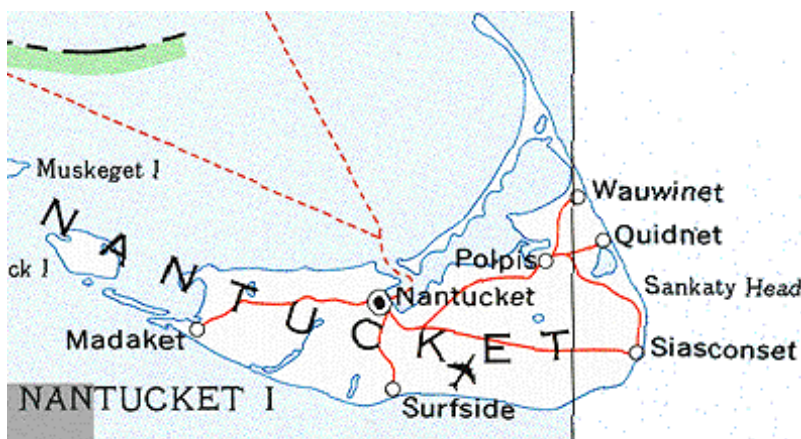
247 Willow Street

Yarmouth Port, MA 02675

Tel: 508.362.4322

Fax: 508.

www.scoutscapecod.org



Printed from TOPO! ©1998 Wildflower Productions (www.topo.com)

Camp Richard is a 100 acre BSA campground on the Island of Nantucket, a 2.5 hour ferry boat ride from Hyannis. You can take your car across or leave it in Hyannis, MA. You can rent a car, bike or moped on the Island right where you get off the ferry. The camp isn't a summer camp. It's a very nice place for a troop campout. It has 3 large campsites, a small trading post, flush toilets, HOT showers, a game field, and sporting equipment to play soccer, volley ball, basketball, horse shoes, and football. The ocean is about 1 mile away for swimming and fishing.

Camp Richard has a new Lodge Building that opened in 2000 with a game room and fireplace.

Facilities at a Glance

- 100 Acres
- 3 Troop Campsites
- 0 Winter Cabins
- Adirondack Shelters
- Lake
- Latrines
- Flush Toilets
- Drinking Water
- Fire Rings
- Swimming
- Fishing
- Boating
- Hiking

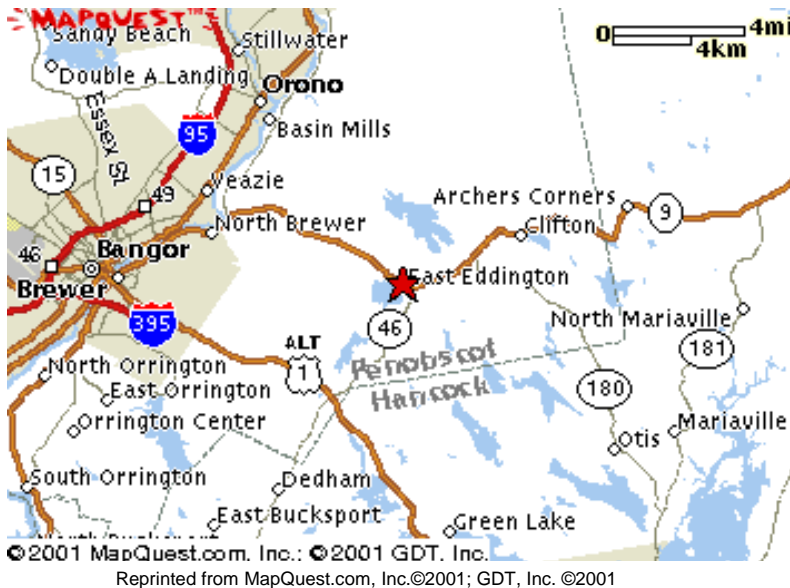


Reprinted from TOPO!©1998 Wildflower Productions (www.topo.com)





Camp Roosevelt



Location:

East Eddington, ME
Tel: 207.
Fax: 207.

Operated by:

Katahdin Area Council
P. O. Box 1869
Bangor, ME 04402-1869
Tel: 207.866.3528
Fax: 207.866.3283
www.katahdinareabsa.org

Nestled at the base of Black Cap Mountain and surrounding 300 acre Little Fitts Pond, Camp Roosevelt has served as the Katahdin Area Council's summer camp since 1921. Located 15 miles east of Bangor on more than 1800 acres of pristine forestland, Camp Roosevelt has 16 troop campsites.

Camp Roosevelt is primarily used as a Boy Scout Residential Camp during July and August and is available for general use during the remainder of the year. Handicap facilities are available during the summer camp program season.

Facilities at a Glance

- 2,300 Acres
- 16 Troop Campsites
- 2 Winter Cabins
- Adirondack Shelters
- Lake
- Latrines
- Flush Toilets
- Drinking Water
- Fire Rings
- Swimming
- Fishing
- Boating
- Hiking



Reprinted from TopoUSA©2001 DeLorme (www.delorme.com)





Sandsland

Location:

Connecticut Avenue
Block Island, RI 02807
Tel: 401.
Fax: 401.

Operated by:

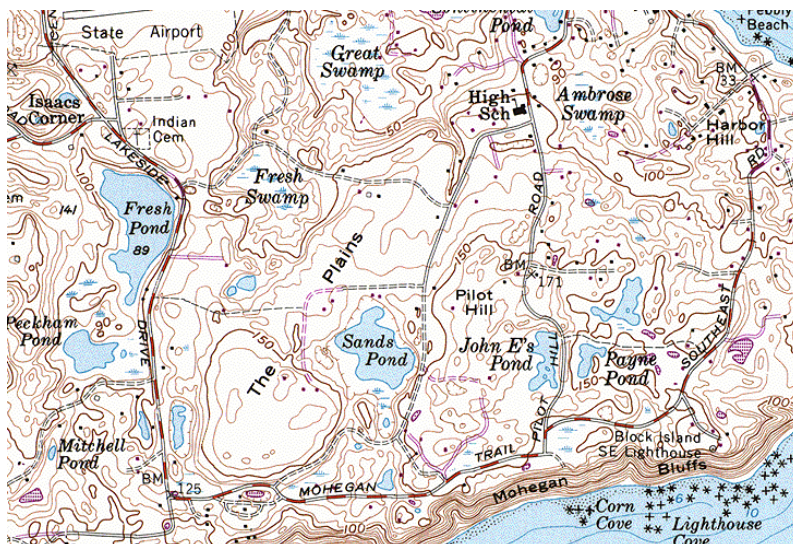
Narragansett Council
175 Broad Street
Providence, RI 02903-4081
Tel: 401.351.8700
Fax: 401.351.5515
www.narragansettbsa.org

Occupies 30 acres and offers tent camping.



©2001 MapQuest.com, Inc.: ©2001 Navigation Technologies

Reprinted from MapQuest.com, Inc.©2000; GDT, Inc. ©2000



Reprinted from TOPOI©1998 Wildflower Productions (www.topo.com)

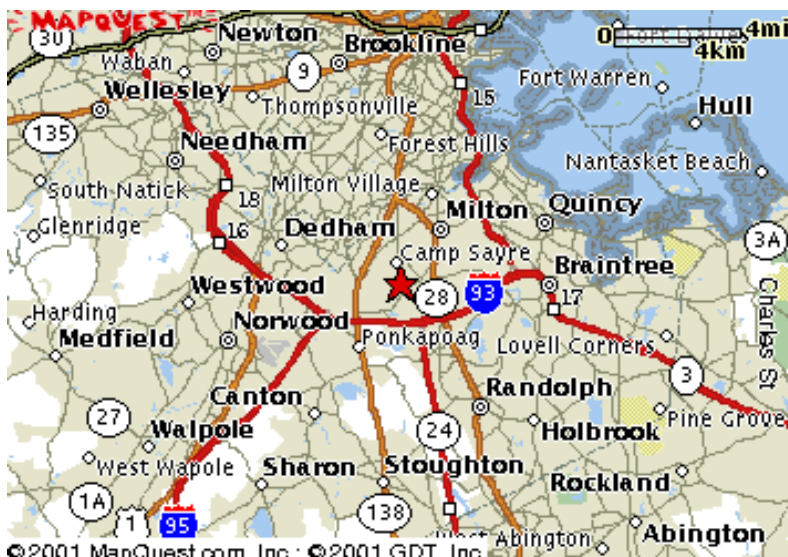
Facilities at a Glance

- 30 Acres
- 3 Troop Campsites
- 0 Winter Cabins
- Adirondack Shelters
- Lake
- Latrines
- Flush Toilets
- Drinking Water
- Fire Rings
- Swimming
- Fishing
- Boating
- Hiking





Camp Sayre



Reprinted from MapQuest.com, Inc.©2001; GDT, Inc. ©2001

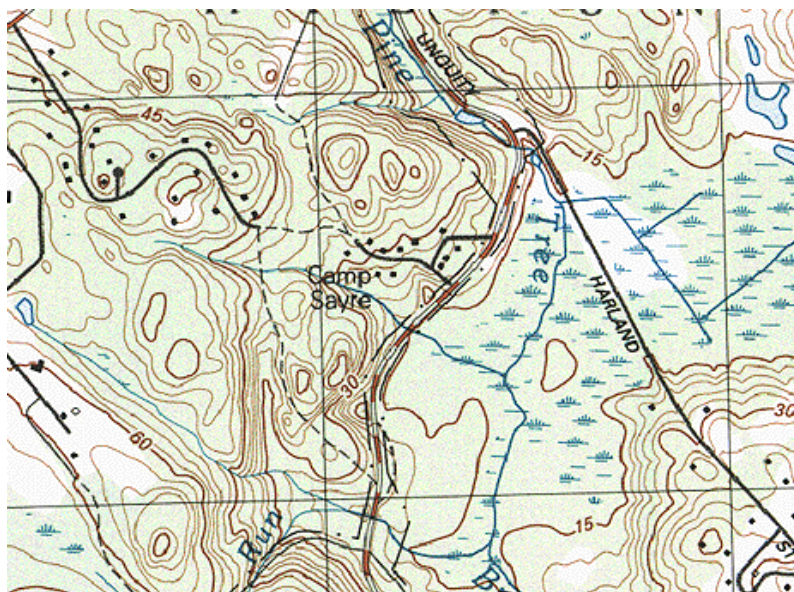
Location:

411 Unquity Road
Milton, MA 02186
Tel: 617.361.3015
Fax: 617.

Operated by:

Boston Minuteman Council
199 State Street, Third Floor
Boston, MA 02109-2648
Tel: 617.723.0007
Fax: 617.723.1779
www.bsaboston.org

Camp Sayre is located only 25 minutes from Boston, nestled in the MDC Blue Hills Reservation, surrounded by thousands of acres of MDC land. The camp has six winterized and heated cabins with capacities of 12-22, each with a gas stove and refrigerator. There is also a fully-heated 100-person capacity lodge/dining hall with complete kitchen facilities. There are nine Adirondack-style lean-to's with fire pits.



Reprinted from TOPO!©1998 Wildflower Productions (www.topo.com)

Facilities at a Glance

- 110 Acres
- 12 Troop Campsites
- 7 Winter Cabins
- 9 Adirondack Shelters
- Lake
- Latrines
- Flush Toilets
- Drinking Water
- Fire Rings
- Swimming
- Fishing
- Boating
- Hiking





Camp Split Rock



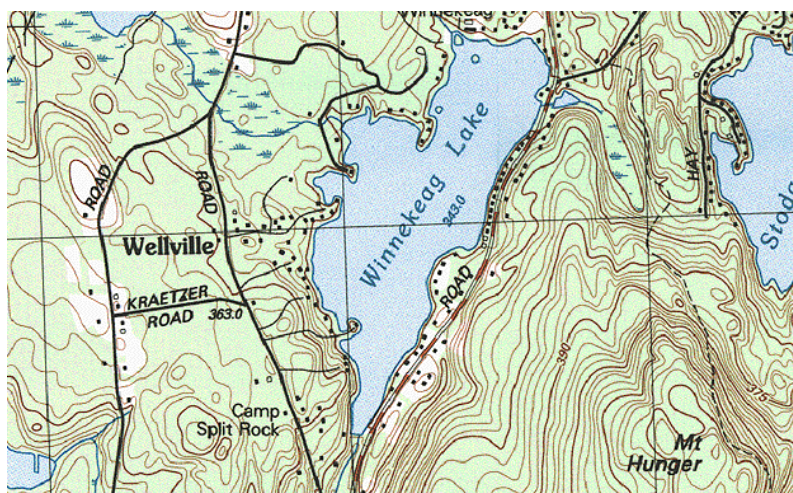
Location:

41 Stowell Road
Asburnham, MA 01430
Tel: 978.827.5551
Fax: 978.

Operated by:

Nashua Valley Council
1980 Lunenburg Road
Lancaster, MA 01523-2735
Tel: 978.534.3532
Fax: 978.
www.nashuavalleybsa.org

Camp Split Rock is a rustic site just a few hours from metropolitan areas in Massachusetts and southern New Hampshire. It is a good base for skiing. Cabins with wood-burnin h stoves and running water are available year round, as well as Adirondacks and campsites.



Reprinted from TOPO!©1998 Wildflower Productions (www.topo.com)

Facilities at a Glance

- 110 Acres
- 6 Troop Campsites
- 2 Winter Cabins
- Adirondack Shelters
- Lake
- Latrines
- Flush Toilets
- Drinking Water
- Fire Rings
- Swimming
- Fishing
- Boating
- Hiking





Camp Squanto

Location:

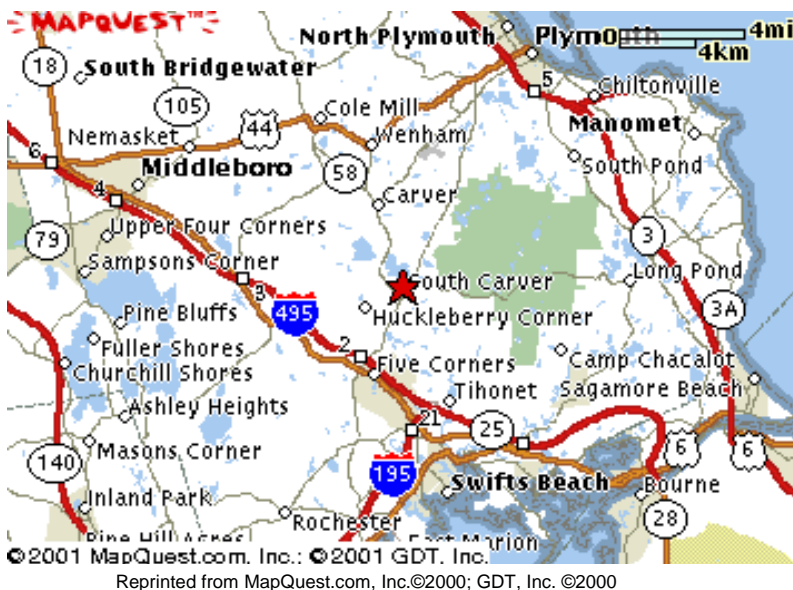
Fawn Pond
Plymouth, MA 02366
Tel: 508.224.2010
Fax: 508.

Operated by:

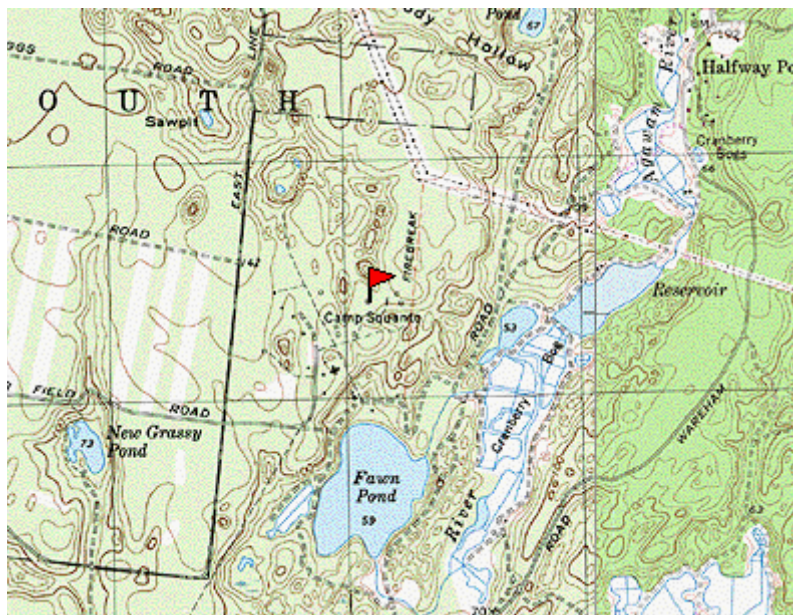
Old Colony Council
2438 Washington Street
Canton, MA 02021-1123
Tel: 781.828.8360
Fax: 781.
www.oldcolonycouncil.com

Camp Squanto is located adjacent to Myles Standish State Forest, with Fawn Pond providing the base for aquatics.

The camp is primarily used as a Boy Scout Residential Camp during July and August and is available for general use during the remainder of the year.



©2001 MapQuest.com, Inc.: ©2001 GDT, Inc.
Reprinted from MapQuest.com, Inc.©2000; GDT, Inc. ©2000



Reprinted from TOPO!©1998 Wildflower Productions (www.topo.com)

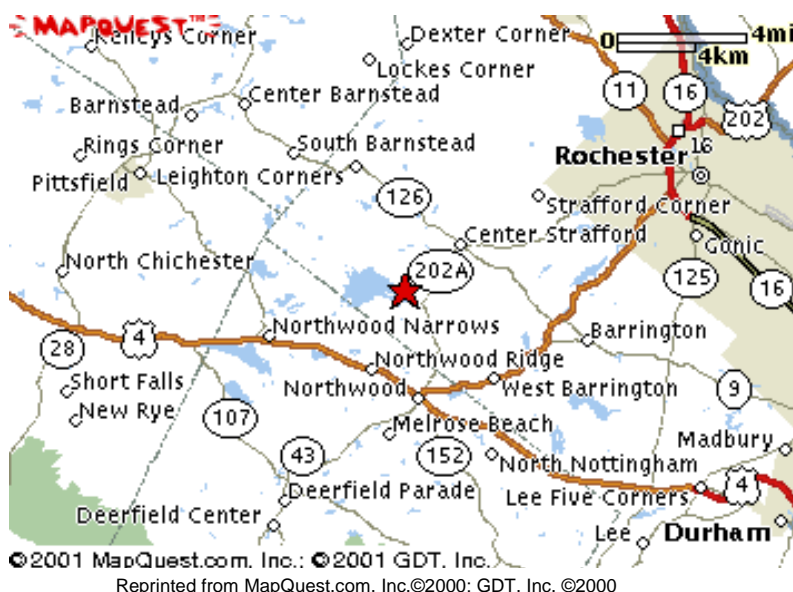
Facilities at a Glance

- 1200 Acres
- 14 Troop Campsites
- 5 Winter Cabins
- Adirondack Shelters
- Lake
- Latrines
- Flush Toilets
- Drinking Water
- Fire Rings
- Swimming
- Fishing
- Boating
- Hiking





Theodore L. Storer Scout Camp



©2001 MapQuest.com, Inc.; ©2001 GDT, Inc.
Reprinted from MapQuest.com, Inc.©2000; GDT, Inc. ©2000

Location:

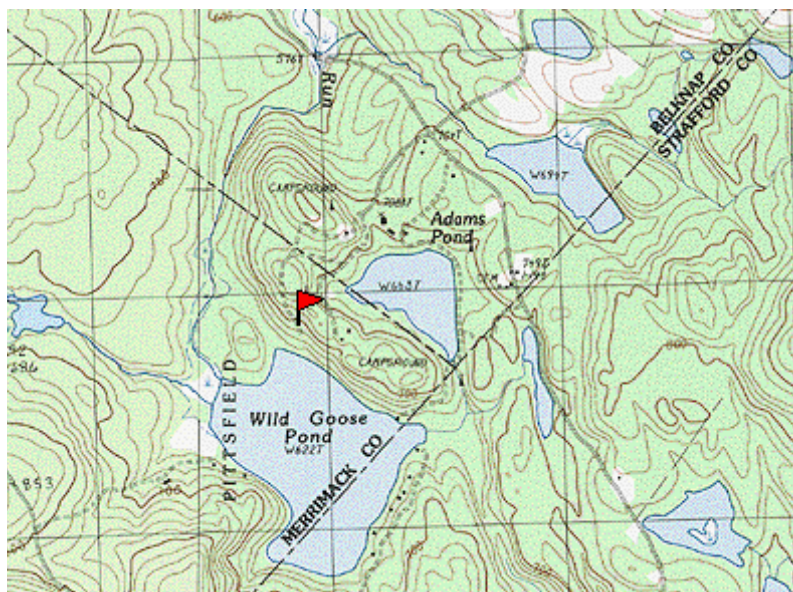
1513 Province Road
Barnstead, NH
Tel: 603.942.5483
Fax: 603.942.5925

Operated by:

Boston Minuteman Council
199 State Street, Third Floor
Boston, MA 02109-2648
Tel: 617.723.0007
Fax: 617.723.1779
www.bsaboston.org

This camp is located on the Boston Minuteman Scout Reservation with Adams pond and Wild Goose Pond providing two full waterfronts.

Six fully-winterized and heated cabins with capacities ranging from 12-36 are each equipped with a gas stove and refrigerator. Winter camping activities include snowshoeing and cross country skiing, and ice fishing on Adams Pond. Downhill skiing is located nearby. Discounts are available for downhill skiing and tubing at Gunstock Mountain (45 min drive).



Reprinted from TOPO!©1998 Wildflower Productions (www.topo.com)

Facilities at a Glance

- 850 Acres
- 24 Troop Campsites
- 6 Winter Cabins
- Adirondack Shelters
- Lake
- Latrines
- Flush Toilets
- Drinking Water
- Fire Rings
- Swimming
- Fishing
- Boating
- Hiking





Camp Sunrise

Location:

Benson, VT
Tel: 603.
Fax: 603.

Operated by:

Green Mountain Council
P. O. Box 557
Waterbury, VT 05676-0557
Tel: 802.244.5189
Fax: 802.244.5259
users.aol.com/gmcbsa

The camp is located on Lake Sunset.
The camp is primarily used as a Cub Scout Residential Camp during July and August and is available for general use during the remainder of the year.

Camp Sunrise is located on several hundred acres of unspoiled forest land. Camp Sunrise is situated between Lake Sunrise and Lake Sunset. This gives campers the opportunity to experience an excellent aquatics program. Swimming, boating, canoeing, and fishing are just a few of our water events.



©2001 MapQuest.com, Inc.

Reprinted from MapQuest.com, Inc.©2001; GDT, Inc. ©2001



Reprinted from TopoUSA©2001 DeLorme (www.delorme.com)

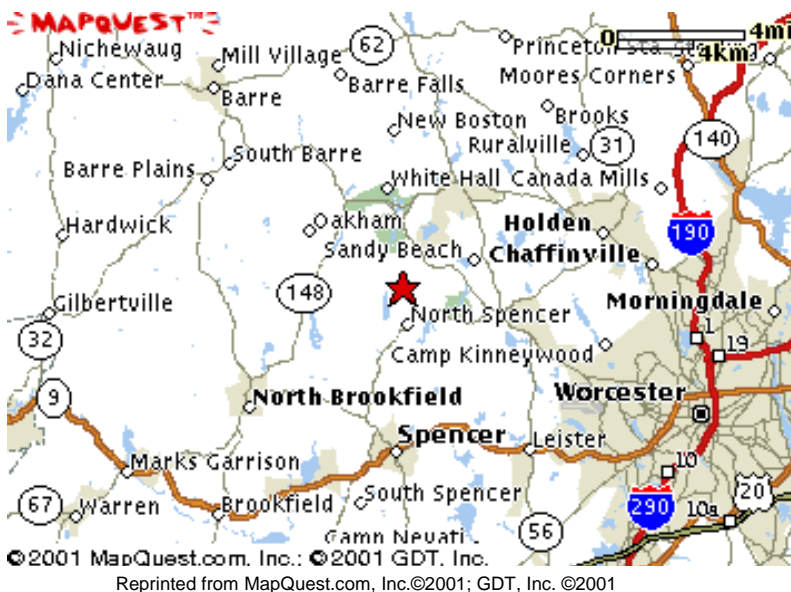
Facilities at a Glance

- 300 Acres
- 6 Troop Campsites
- 0 Winter Cabins
- Adirondack Shelters
- Lake
- Latrines
- Flush Toilets
- Drinking Water
- Fire Rings
- Swimming
- Fishing
- Boating
- Hiking





Treasure Valley Scout Reservation



Location:

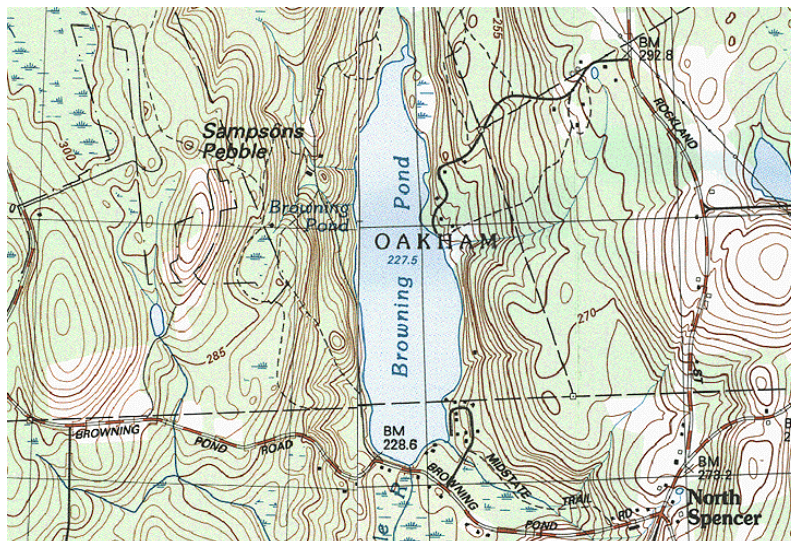
394 Pleasantdale Road
Rutland, MA 01543
Tel: 508.
Fax: 508.

Operated by:

Mohegan Council
19 Harvard Street
Worcester, MA 01609-2870
Tel: 508.752.3768
Fax: 508.752.3047
www.geocities.com/Heartland/Hills/8740/trp36hgn.htm

Treasure Valley is a large reservation adjacent to a 40,000 acre state forest preserve. The camp is divided by the 20 acre Browning Pond into east and west.

Treasure Valley Scout Reservation is primarily used as a Boy Scout Residential Camp during July and August and is available for general use during the remainder of the year.



Reprinted from TOPO!©1998 Wildflower Productions (www.topo.com)

Facilities at a Glance

- 1,800 Acres
- 21 Troop Campsites
- 6 Winter Cabins
- 6 Adirondack Shelters
- Lake
- Latrines
- Flush Toilets
- Drinking Water
- Fire Rings
- Swimming
- Fishing
- Boating
- Hiking





Camp Wanocksett



Reprinted from MapQuest.com, Inc. ©2001; GDT, Inc. ©2001

Location:

193 Dublin Road
Jaffrey, NH 03452
Tel: 603.563.8550
Fax: 603.

Operated by:

Nashua Valley Council
1980 Lunenburg Road
Lancaster, MA 01523-2735
Tel: 978.534.3532
Fax: 978.534.4618
www.nashuavalleybsa.org

Camp Wanocksett is the Boy Scout Camp of the Nashua Valley Council, located on the border of Jaffrey and Dublin, NH. The camp sits on the shores of Thorndike Pond. During the summer, Wanocksett operates seven weeks of residential troop camping. A number of winterized cabins as well as tent sites and outpost camps offer abundant unit camping experiences during any season. Just a short distance from the camp, Grand Monadnock Mountain rises over the surrounding landscape. The mountain and the state park land surrounding it offer numerous hiking and exploring opportunities.



Reprinted from TOPO!©1998 Wildflower Productions (www.topo.com)

Facilities at a Glance

- 200 Acres
- 10 Troop Campsites
- 7 Winter Cabins
- Adirondack Shelters
- Lake
- Latrines
- Flush Toilets
- Drinking Water
- Fire Rings
- Swimming
- Fishing
- Boating
- Hiking
- SnowShoe Rentals





White Mountain High Adventure Base



©2001 MapQuest.com, Inc.; ©2001 GDT, Inc.
Reprinted from MapQuest.com, Inc.©2001; GDT, Inc. ©2001

Location:

216 Wiley Pond Road
Barnstead, NH
Tel: 603.269.3990
Fax: 603.

Operated by:

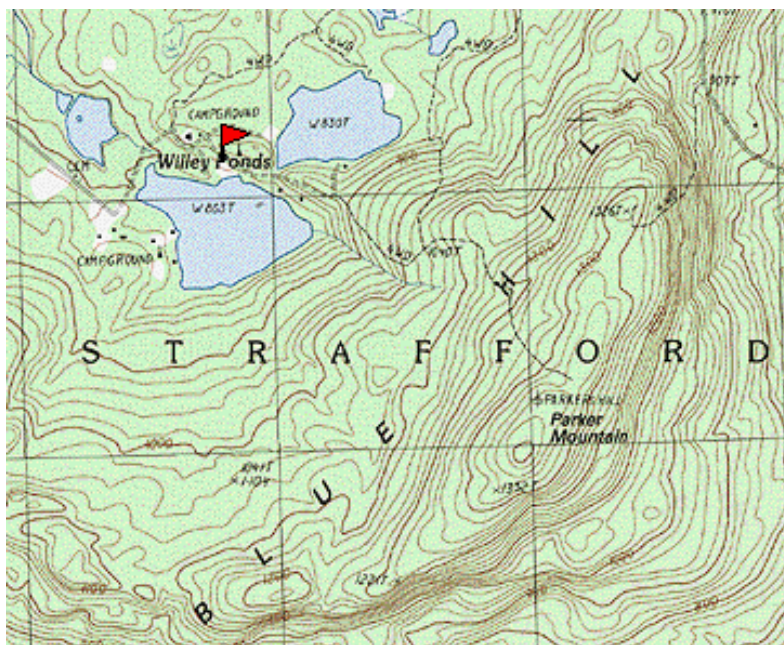
Boston Minuteman Council
199 State Street, Third Floor
Boston, MA 02109-2648
Tel: 617.723.0007
Fax: 617.723.1779
www.bsaboston.org

White Mountain High Adventure Base (formerly Parker Mountain High Adventure Base) has eight fully-winterized and heated cabins with capacities from 12-36, each with a gas stove and refrigerator. There is also a full service Quartermaster Center with stoves, chef kits, and patrol boxes.

Cross country skiing equipment is available for rent, and snowshoes are available. The site includes ice fishing on Adams Pond and sledding on site. Gunstock Mountain is available for downhill skiing and is only 45 minutes from the site.

Facilities at a Glance

- 1200 Acres
- 24 Troop Campsites
- 8 Winter Cabins
- Adirondack Shelters
- Lake
- Latrines
- Flush Toilets
- Drinking Water
- Fire Rings
- Swimming
- Fishing
- Boating
- Hiking

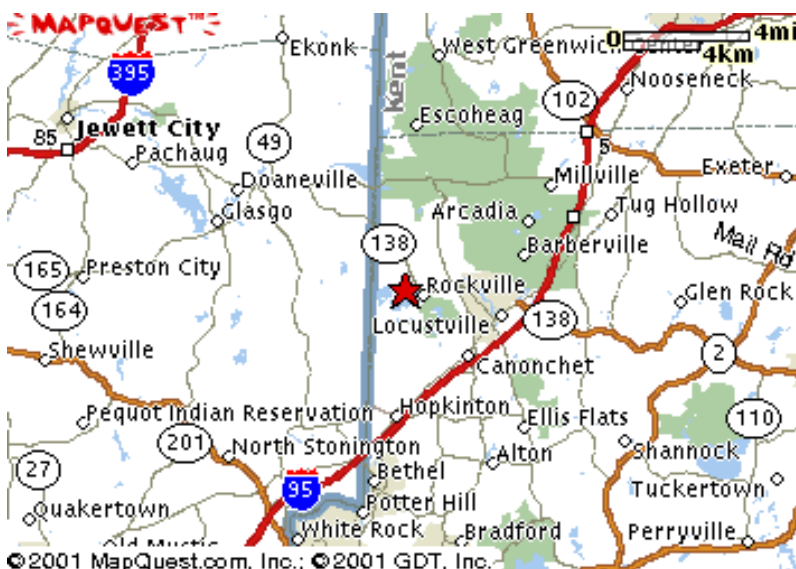


Reprinted from TOPO!©1998 Wildflower Productions (www.topo.com)





Yawgoog Scout Reservation



Location:

61 Camp Yawgoog Road
Hope Valley, RI 02832
Tel: 401.
Fax: 401.

Operated by:

Narragansett Council
175 Broad Street
Providence, RI 02903-4081
Tel: 401.351.8700
Fax: 401.351.5515
www.narragansettbsa.org

This reservation has three camps (Medicine Bow, Sandy Beach and Three Point). Yawgoog Pond has five ponds and serves as a waterfront for all camps.

The camp is primarily used as a Boy Scout Residential Camp during July and August and is available for general use during the remainder of the year.

Reprinted from MapQuest.com, Inc.©2000; GDT, Inc. ©2000



Reprinted from TOPO!©1998 Wildflower Productions (www.topo.com)

Facilities at a Glance

- 1800 Acres
- 13 Troop Campsites
- 6 Winter Cabins
- Adirondack Shelters
- Lake
- Latrines
- Flush Toilets
- Drinking Water
- Fire Rings
- Swimming
- Fishing
- Boating
- Hiking



